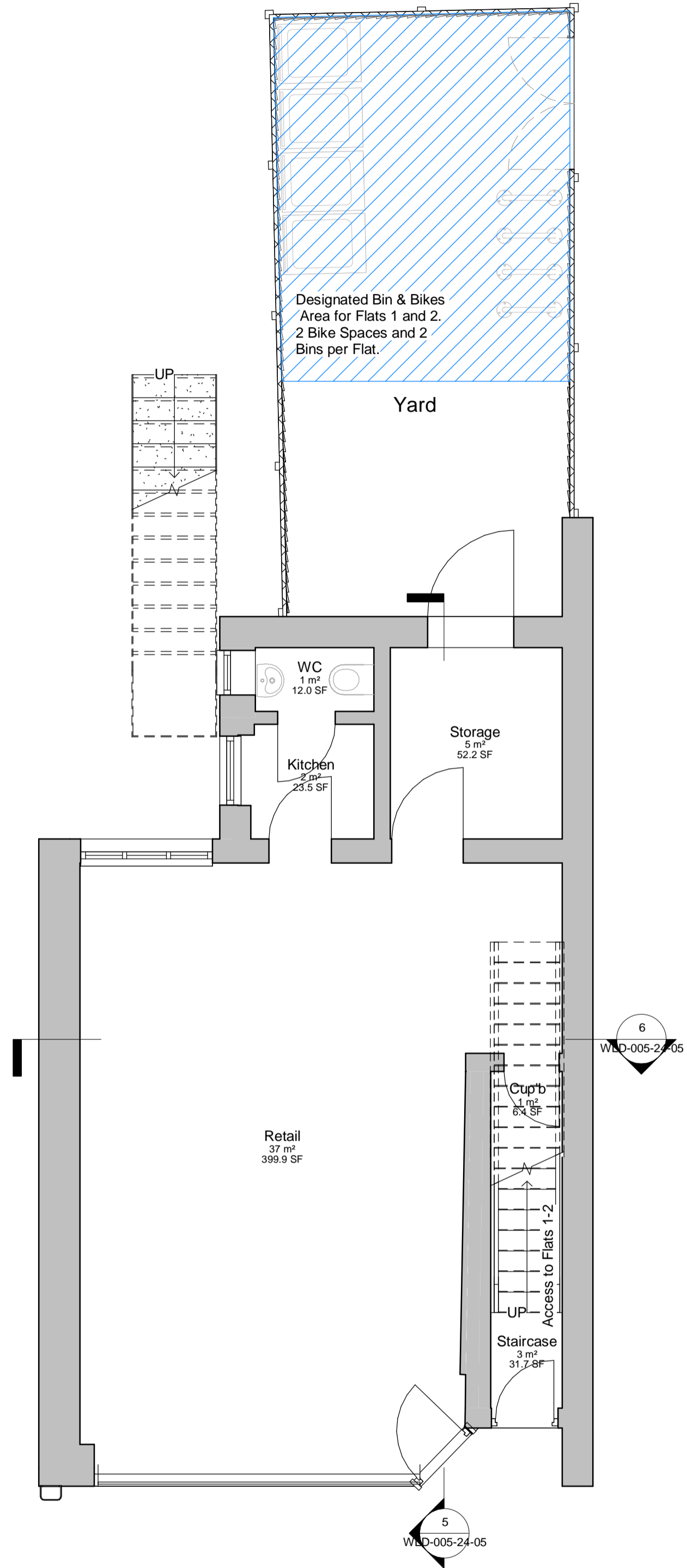
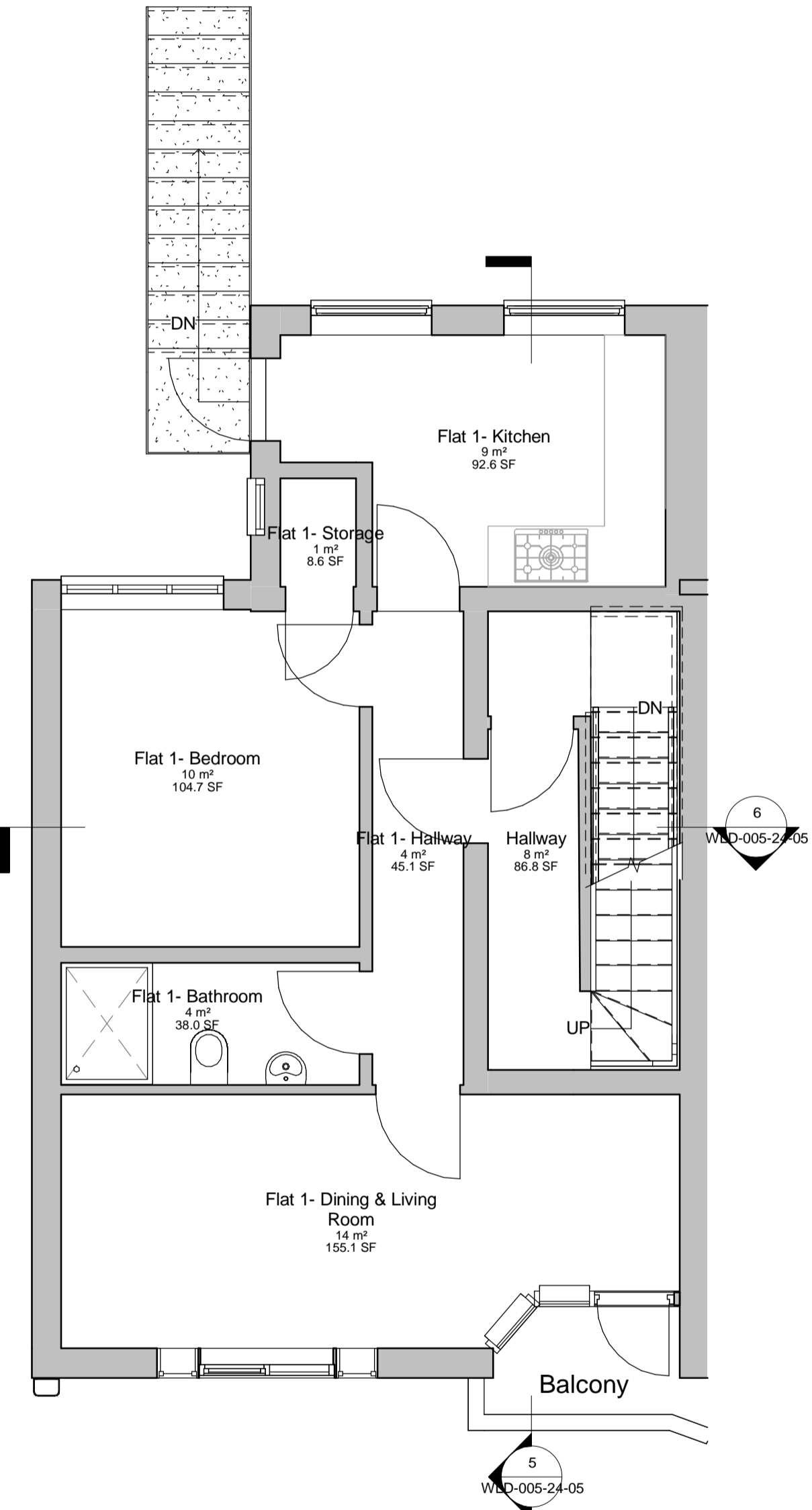


**Notes:**

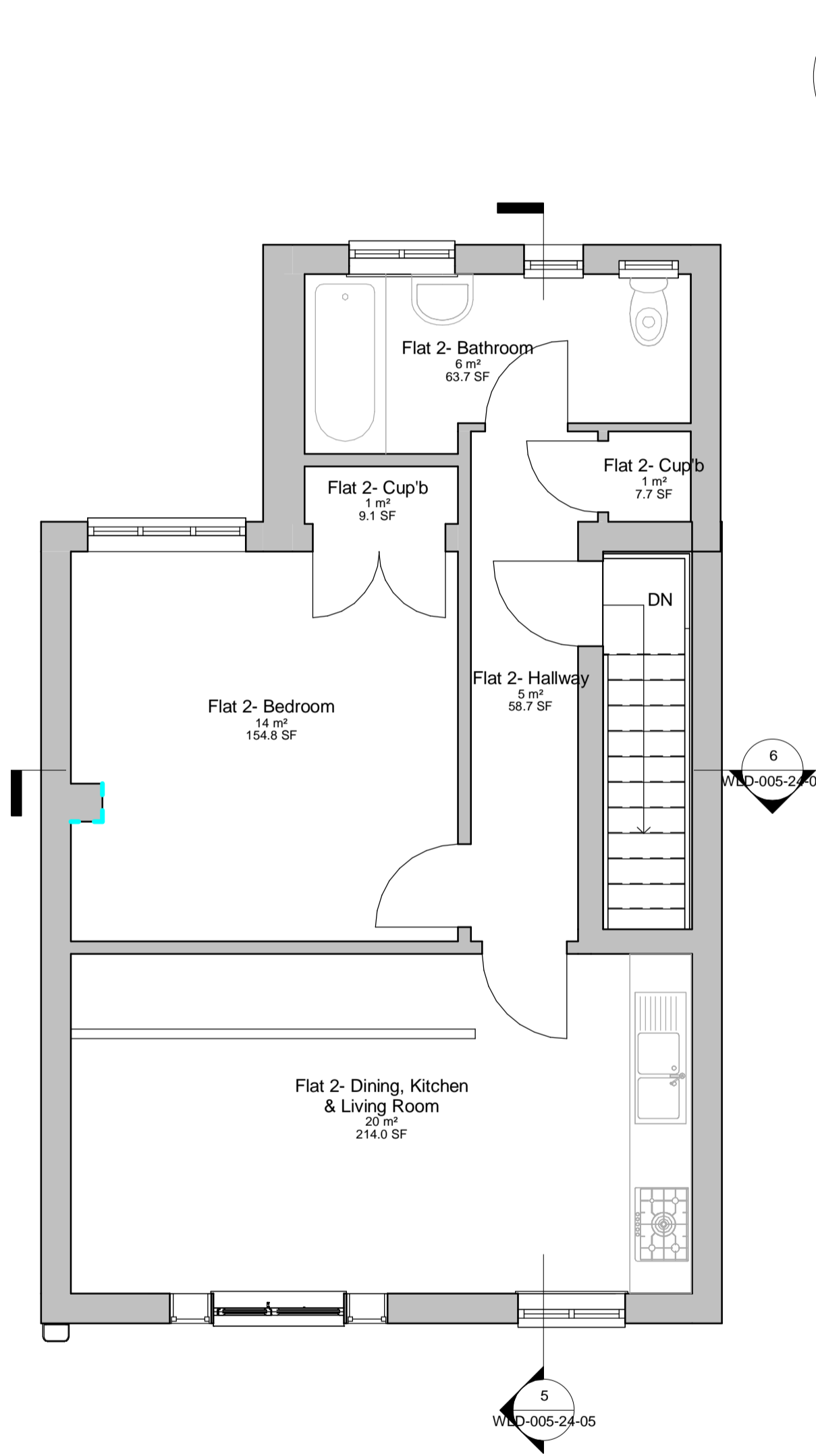
1. THE COPYRIGHT OF THIS DRAWING IS VESTED IN WARWICK LANE DEVELOPMENTS AND IT MAY NOT BE REPRODUCED IN WHOLE OR PART OR USED FOR THE MANUFACTURE OF ANY ARTICLE WITHOUT THE EXPRESS PERMISSION OF THE COPYRIGHT HOLDERS.
2. WORK TO FIGURED DIMENSIONS ONLY.
3. THIS DRAWING IS TO BE READ IN CONJUNCTION WITH ALL RELEVANT ARCHITECTS, SERVICE ENGINEERS AND WARWICK LANE DEVELOPMENTS DRAWINGS AND SPECIFICATIONS.



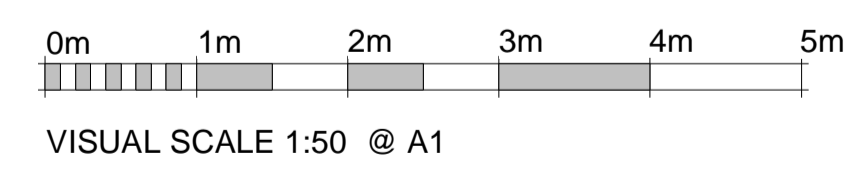
**1 Ground Floor**  
1 : 50



**2 First Floor**  
1 : 50



**3 Second Floor**  
1 : 50



**Flat 1 Room Schedule (1b1p)**

Name	Area
Flat 1- Bedroom	10 m <sup>2</sup>
Flat 1- Kitchen	9 m <sup>2</sup>
Flat 1- Storage	1 m <sup>2</sup>
Flat 1- Dining & Living Room	14 m <sup>2</sup>
Flat 1- Bathroom	4 m <sup>2</sup>
Flat 1- Hallway	4 m <sup>2</sup>
Grand total: 6	41 m <sup>2</sup>

Flat 1 GIA: 43.70 m<sup>2</sup>

**Flat 2 Room Schedule (1b2p)**

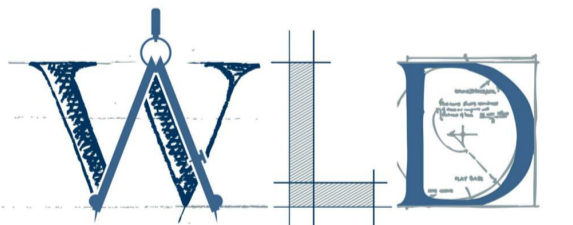
Name	Area
Flat 2- Cup'b	2 m <sup>2</sup>
Flat 2- Hallway	5 m <sup>2</sup>
Flat 2- Bathroom	6 m <sup>2</sup>
Flat 2- Bedroom	14 m <sup>2</sup>
Flat 2- Dining, Kitchen & Living Room	20 m <sup>2</sup>
Grand total: 6	47 m <sup>2</sup>

Flat 2 GIA: 50 m<sup>2</sup>

**Residential GIA: 96.7 m<sup>2</sup>**

Revision Number	Revision Description	Issued by	Revision Date

STATUS: **Planning Issue**



**Warwick Lane.**  
Developments Ltd

T 01903 233 332 Ex1 134 | DF 01903 372 882 | E ufaras@wd-group.co.uk  
1 The Steyne, Worthing, West Sussex, BN11 3DS

CLIENT: SITE ADDRESS:  
**46 Goring Road,  
Worthing, BN12 4AD**

DRAWING:  
**Conversion of Upper Floors into 2x 1 Bed Flats**

TITLE:  
**Proposed Floor Plans**

SCALE AT A1:	DATE:	DRAWN:	CHECKED:
1 : 50	18/10/2024	UF	ARW
PROJECT NO:	DRAWING NO:	REVISION:	
WLD-005-24	WLD-005-24-004		