

Adur and Worthing Councils
Planning Department
October 2025

Materials Schedule

Property Address: Oceanview Heights, 15 Montague Place, Worthing, West Sussex

Application Reference: AWDM/1593/24

This schedule of materials document is intended to assist with the planning application for the Conversion of the residential storage space (C3) at second floor level to provide one additional flat with new windows to East elevation. App reference: AWDM/1593/24.

To be read in conjunction with drawing number 1965.PR.102 Rev B 'As Proposed Elevations' included below on pg.2 .

1- Windows

Supplier – Glass Openings

Full Height Black framed UPVC window frames with top opener sections.

Thermal values up to: 0.9 W/m²K

A+ Energy Rating

<https://glassopenings.co.uk/product/upvc-flush-casement-window-style-1/>

Please find technical Specification sheet for the casement windows attached.



2- Window Reveals and Recesses

Aluminium Reveal/Jam and Sills

Black Reveal to match the Black window frame.

Dark colour also conceals build up of dirt and grime.

<https://novoframe.com/en/products/window-reveals/>

Example of Window reveal shown to right.

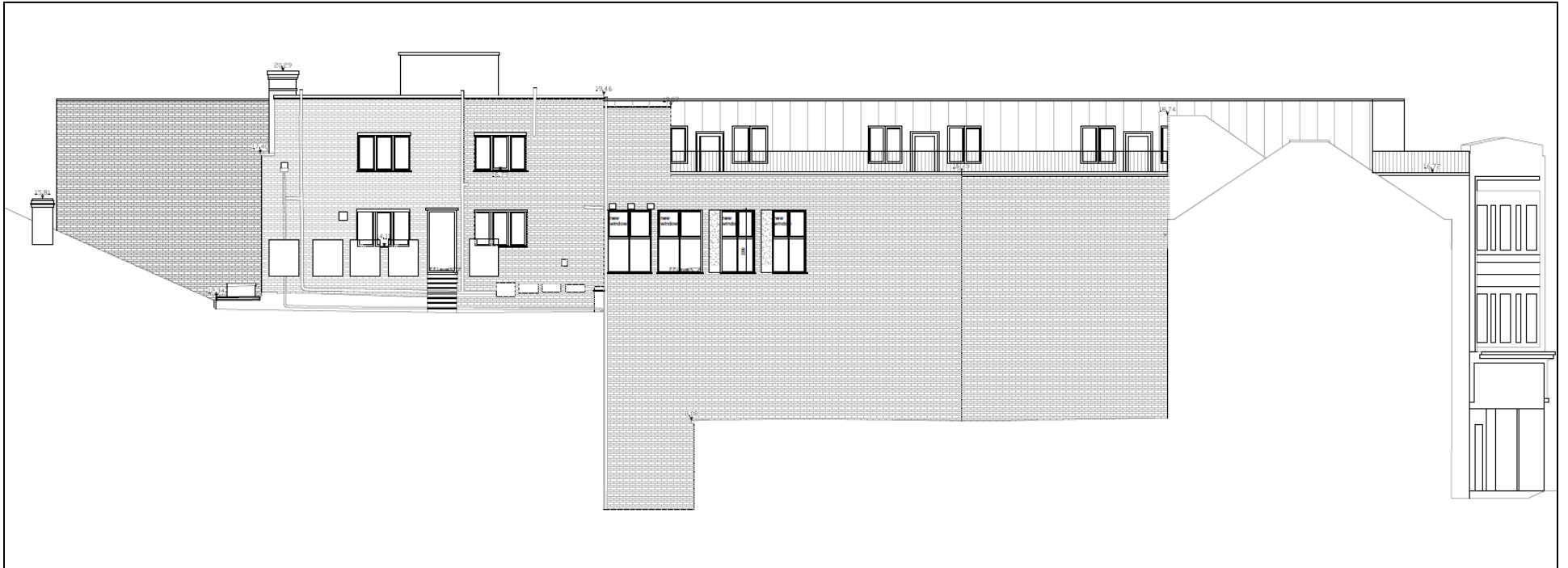
Please find technical Specification sheet for the aluminium reveals attached.



EATOWN PLANNING

town planning consultancy | delivering planning that works

t: 0330 221 0449 e: info@eatownplanning.co.uk



As proposed elevations