



NOVOFRAME

Technical Catalogue

THE NEW
GENERATION WINDOW FRAME
SURROUND

by **AluForm**



How can the Novoframe protruding reveal frames help you?

Novoframe's protruding reveal frame does more than just enhance the aesthetics of your building; it offers a range of functionalities crucial to modern facades. Here are the key features and benefits:

- **Tailored to Fit**

We customize each protruding reveal frame to match the exact dimensions of each window or door for flawless integration.

- **Finishes the Window or Door Reveal**

With our reveal frame you can have a perfect edge and finish for window/door reveal in both insulated and ventilated facades(plaster, brickwork, clinkers, stone, wood cladding, ceramics, etc.).

- **Efficient Water Drainage**

Our protruded reveal frames ensure maximum protection against water infiltration, designed to drain rainwater externally, keeping the façade spotless.

- **Ready To Install**

Crafted from aluminum, Welded at the corners at a 45° angle and delivered ready to install, our protruded frames can be fitted in just 15-20 minutes, significantly reducing on-site time and costs. Installation time is quick, straightforward, and complication-free compared to the hours(+6hours) it takes to finish the exterior window reveals in brickwork, wood or other cladding.

- **Shading System**

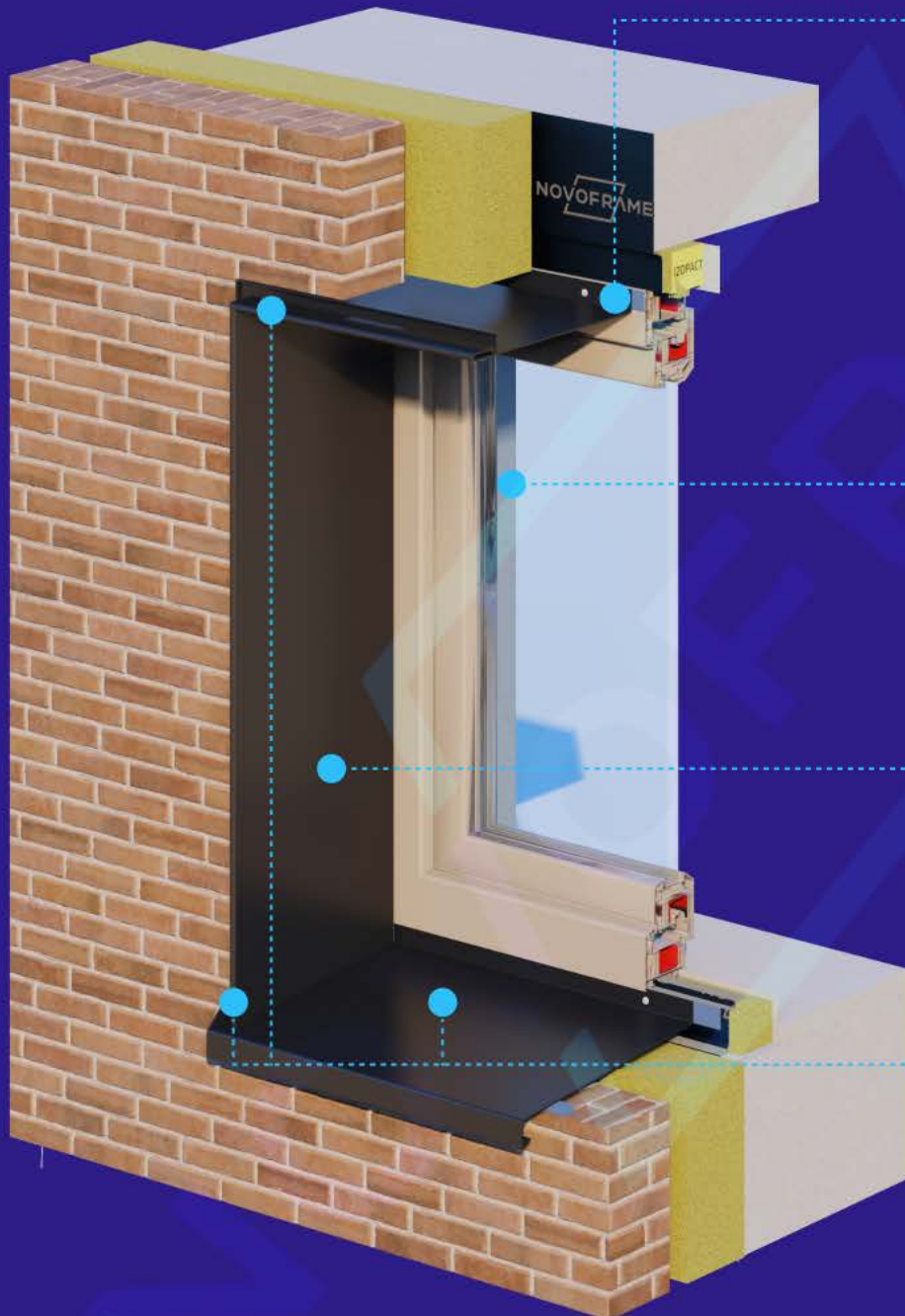
Our protruded reveal frame has the capability to house the Warema shading system cassette and its guide rails, which can be completely concealed as well as the potential to serve as a shutter frame.

- **Overall Cost Efficiency**

The reduced installation time not only minimizes difficulties on-site but also translates to overall lower costs, offering you excellent efficiency.

by **AluForm**

NOVOFRAME



Ready-To-Install - Effortless Installation:

Save time and your budget with our protruded reveal frames welded at the corners; this simplifies the installation process, reducing it to just 20 minutes per frame. This results in fewer complications and a lower overall cost.

Tailor-Made Customization:

Each protruded reveal frame is precisely crafted to fit the dimensions of each window in your project, ensuring not just a perfect fit but also a seamless aesthetic.

Finishes the Window Reveal:

This protruded frame provides a sleek, finished look to the window reveals, harmoniously integrating them into the building's facade.

Efficient Water Drainage:

Novoframe's protruded reveal frame is engineered to direct water away from the façade, thereby minimizing water damage and ensuring the longevity of your façade.

THE NEW
GENERATION WINDOW FRAME
SURROUND

CONTENT:

1. Product Description	3
2. Order Procedures	4
3. Assembly Instructions	
• 3.1. First Method: Direct Installation of Novoframe's protruded reveal frame - Text	5
• 3.2. Assembly Instructions Illustrations.....	6
• 3.3. Technical Details - Direct Installation of the reveal frame.....	7
• 3.4. Technical Details with different types of facades	8-10
• 3.5. Solbanc/Rising Window Profile in Reveal Frame Installations	11
• 3.6. II. Second Method: Installing the Reveal Frame System through an F Profile - Text	12
• 3.7. Assembly Instructions Illustrations	13-14
• 3.8. Technical Drawings - Installing the Reveal Frame System through an F Profile.....	15
5. Screw position in doors and windows	16
6. NOVOFRAME's Reveal Frame - Shading System Technical Details	17
• 4.1. 3D Model.....	18
5. 3D Section Details With Different Types of Facades	
• J Minor Profile 3D Section Through Ventilated Facade.....	19
• J Minor Profile 3D Section Through Brickwork Facade	20
• J Minor Profile 3D Section Through Plastered Facade	21
• J Minor Profile 3D Section Through Wood-Cladding Facade	22
6. Why Would You Work With Us.	23

Product description and assembly instructions (EN)

WINDOW & DOOR PROTRUDED REVEAL FRAMES:

- They are used to finish the outer window reveal; they are mainly used on ventilated and thermally insulated facades.
- Can be installed on any window frame - Aluminium, PVC, Wooden, Steel
- Are custom made to your project's windows and doors sizes
- Are delivered assembled as a prefabricated product to ensure a quick installation: 15-20 minutes per reveal frame

CHARACTERISTICS:

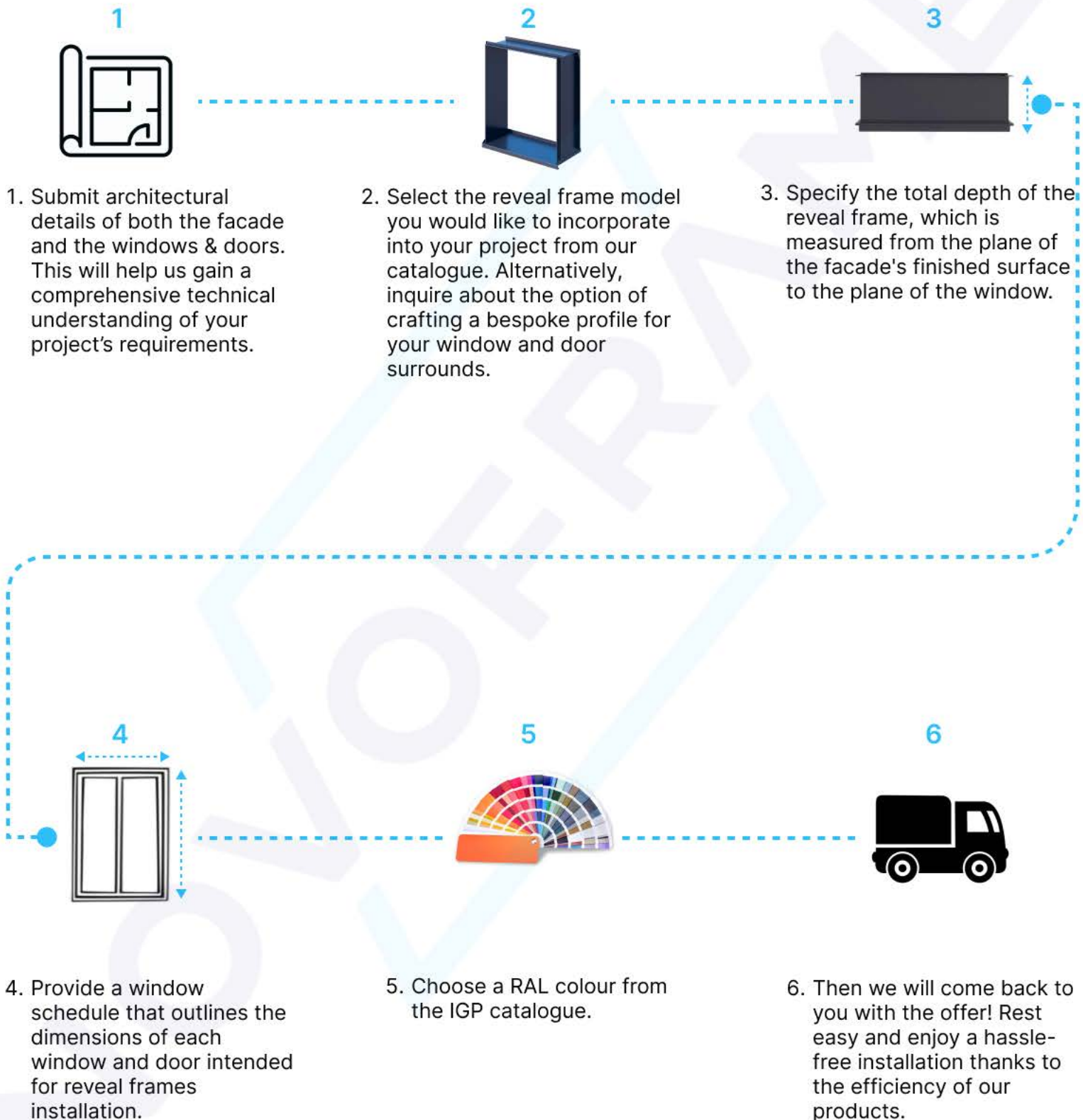
- The depth of the reveal frame can have up to 380 mm. Larger dimensions can be achieved on request, subject to manufacturing limitations.
- The height and width of a reveal frame can have up to 2600 × 4000 mm. Larger dimensions can be achieved on request, subject to manufacturing limitations.
- The reveal frame is a custom-made, fully welded product crafted from 2 mm thick aluminium metal sheets. All welded edges undergo meticulous sanding and polishing to achieve a flawless finish. Once perfected, the reveal frames are then dispatched for painting.
- The whole product is then powder coated in a RAL colour of your choosing, by providing the colour code.
- The reveal frame are available for straight windows and doors. Different angles of the reveal frame system are available on request, subject to manufacturing limitations.



Larger dimensions can be achieved on request, subject to manufacturing limitations. Lengths can be extended by joining the profiles with hidden intermediary fixing pieces, to ensure visual continuity.

THE NEW GENERATION WINDOW FRAME SURROUND

Order procedures:



THE NEW GENERATION WINDOW FRAME SURROUND

ASSEMBLY INSTRUCTIONS:

I. First Method: Direct Installation of Novoframe's Reveal Frame

Preparation:

- Before proceeding with the installation of the reveal frame, ensure that the window, door, or sliding door is already waterproofed and seamlessly integrated with the facade.
- Apply joint sealing tape (such as Compriband or a similar product) to the perimeter of the window where the reveal frame will be installed.

Installation Steps:

1. Attach the Novoframe's reveal frame to the existing window or door frames using screws. The window/door frames can be made of aluminium, PVC plastic, wood, or steel, as outlined in the accompanying technical drawings.
2. For optimal watertightness, you may consider additional waterproofing and sealing measures after the reveal frame has been installed.

Additional Notes:

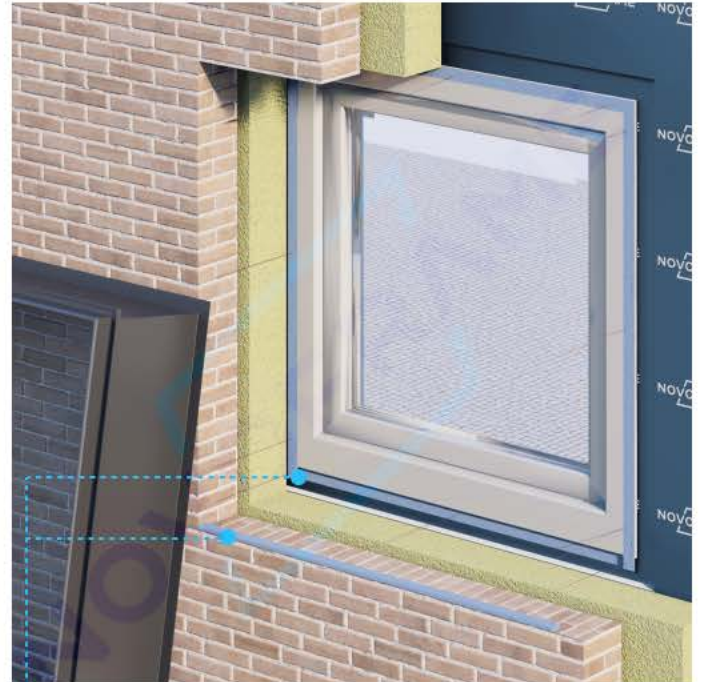
- Throughout all assembly stages, and particularly during the final on-site adjustments, it is imperative to protect the Novoframe's reveal frame from dirt, damage, or any other factors that could compromise its appearance or functionality.
- For optimal performance in Novoframe's reveal frame installations, the use of a **Solbanc or Raising Profile** is recommended for two key reasons:
 1. **Thermal Barrier:** It acts as an insulating layer between the window's bottom and the wall, enhancing energy efficiency.
 2. **Water Drainage:** By elevating the window, the profile allows the sloping sill of the fully welded reveal frame system to drain water effectively towards the edge of the facade.
- For the installation of the NOVOFRAME system we recommend the use of the following:
 1. Stainless Steel Screws 4.2mmx19mm
 2. Blind Rivet 4mmx8mm
 3. Joint sealing tape - Compriband
 4. Raising/Solbanc Profile - Izopact

Assembly guide: FIRST METHOD

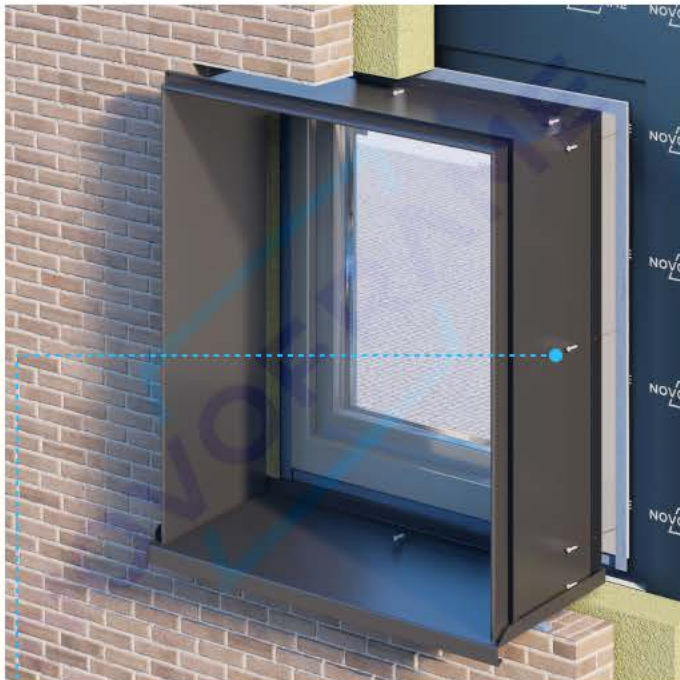
For DWG files & 3D Models contact us at: office@aluform.ro



1. The reveal frame is brought in to the site as a pre-fab product. It will be installed on the frame of the window, regardless of the window's material.



2. Apply joint sealing tape to the window perimeter where NOVOFRAME's reveal frame will be installed.



3. Put NOVOFRAME's reveal frame into position. Fix the system using screws to frames of aluminium, PVC plastic, wood, or steel windows or doors. Consult drawings.



4. Complete the rest of the facade around the reveal frame, and you're all set!

Assembly guide: FIRST METHOD

For DWG files & 3D Models contact us at: office@aluform.ro

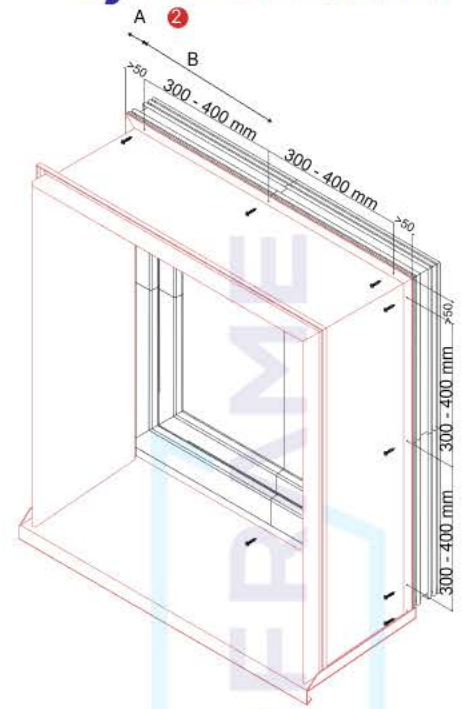
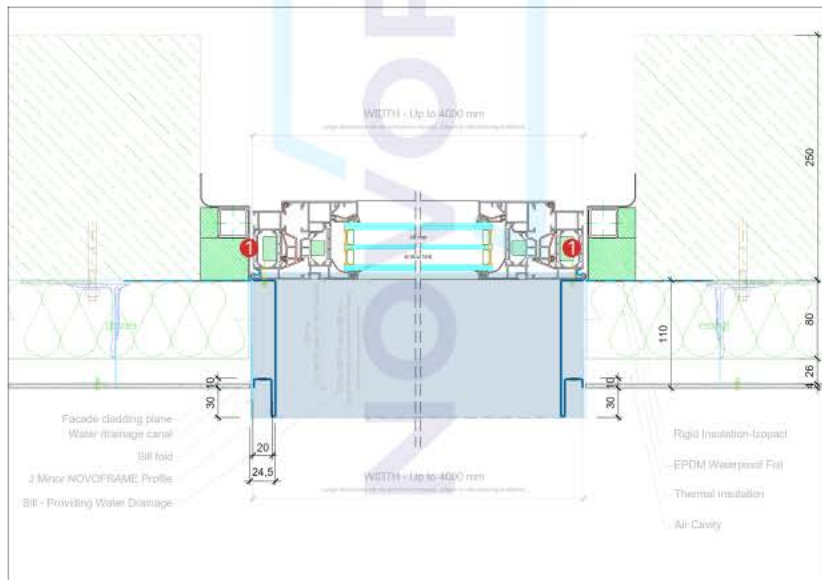


Figure . Axonometric Projection of NOVOFRAME's reveal frame system.

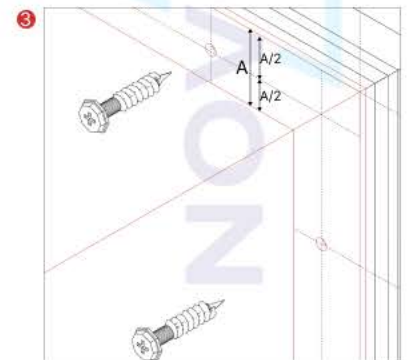


Figure . Drill holes position.

1 Install the NOVOFRAME reveal frame system by using screws to the window frame.

2 A: > 50 mm (Distance from the edge of the NOVOFRAME to the fixing hole)
B: 300-400 mm (Distance between fixing holes)

3 The drilling holes should be made at the middle of the distance as per the figure.

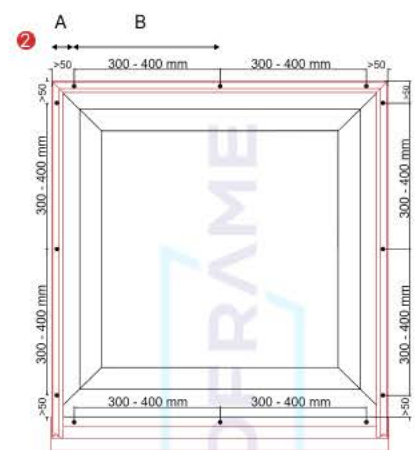
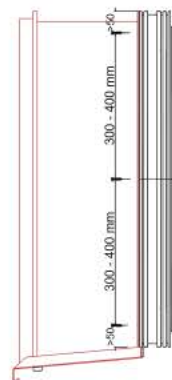
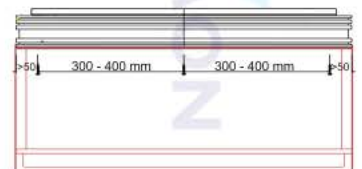
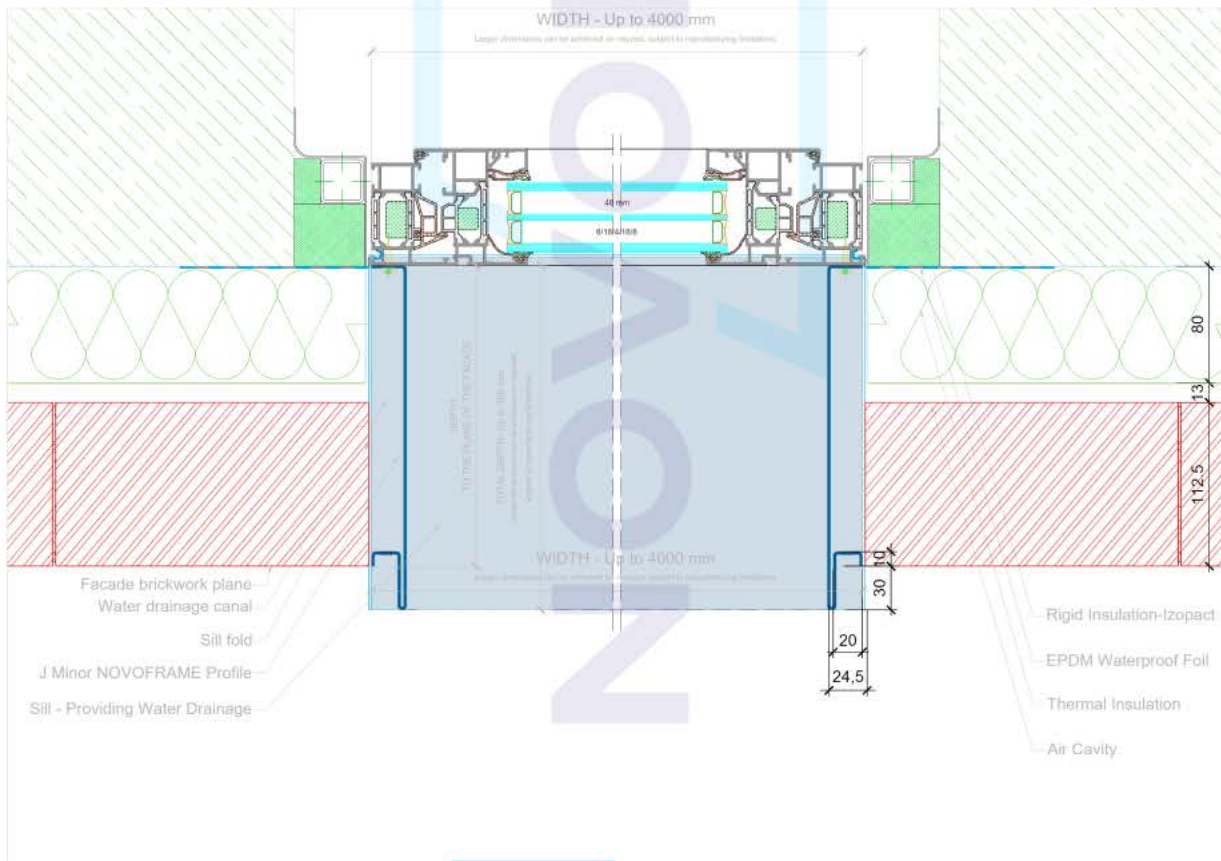
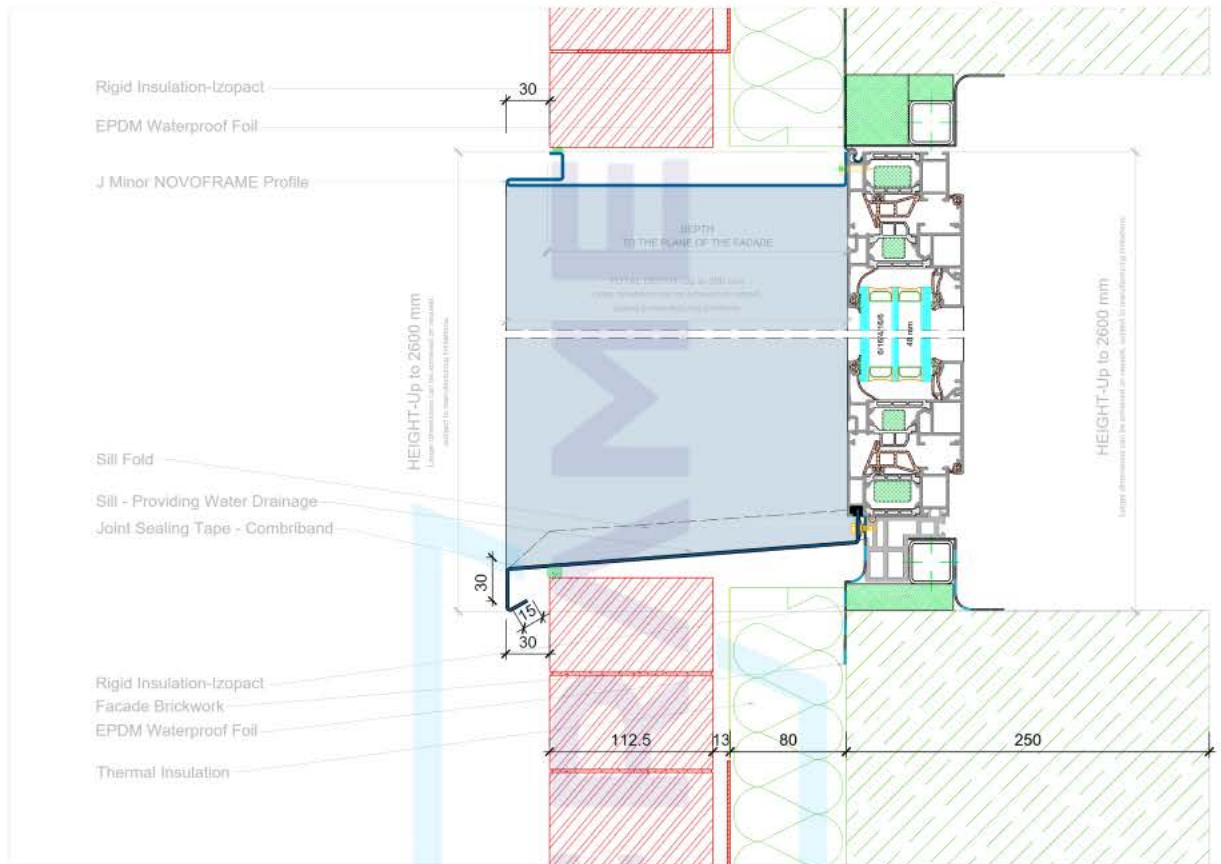


Figure . Front Elevation, Side Elevation, Plan of the Reveal Frame.

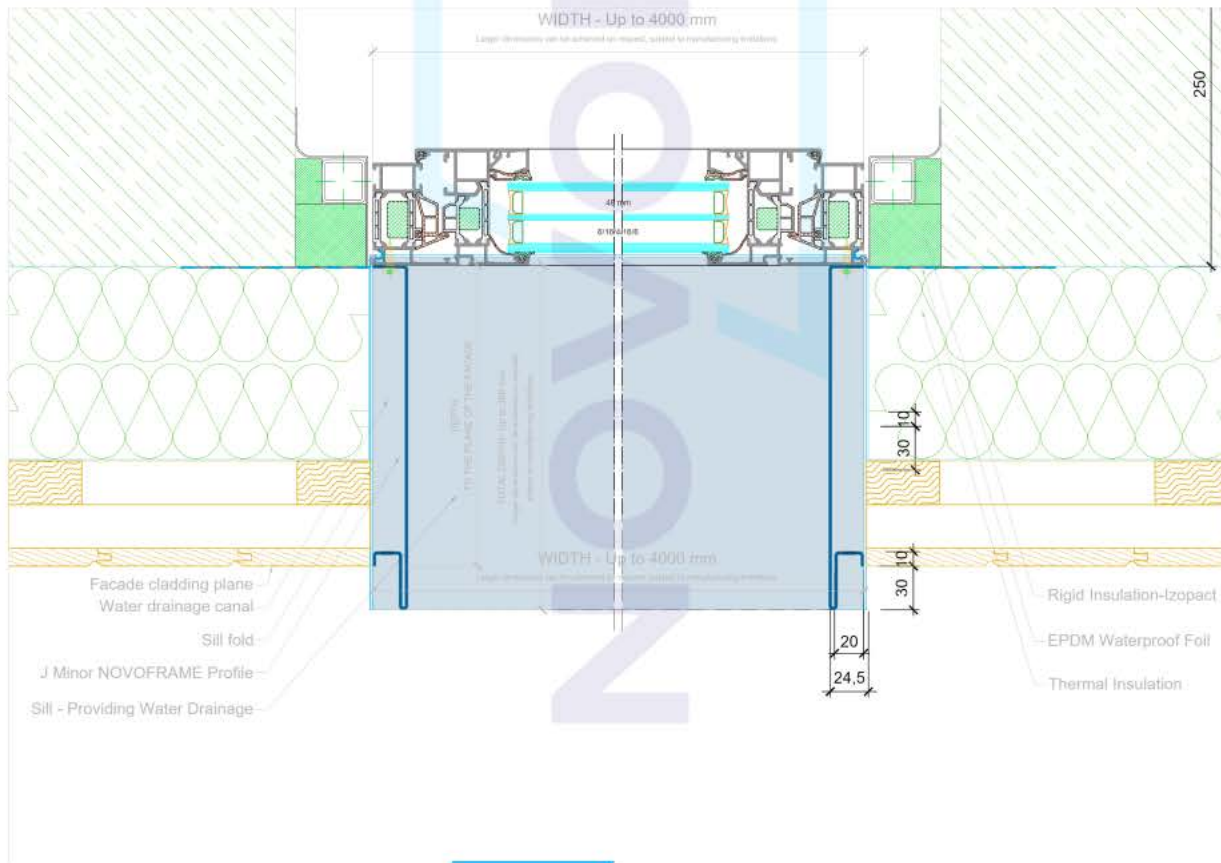
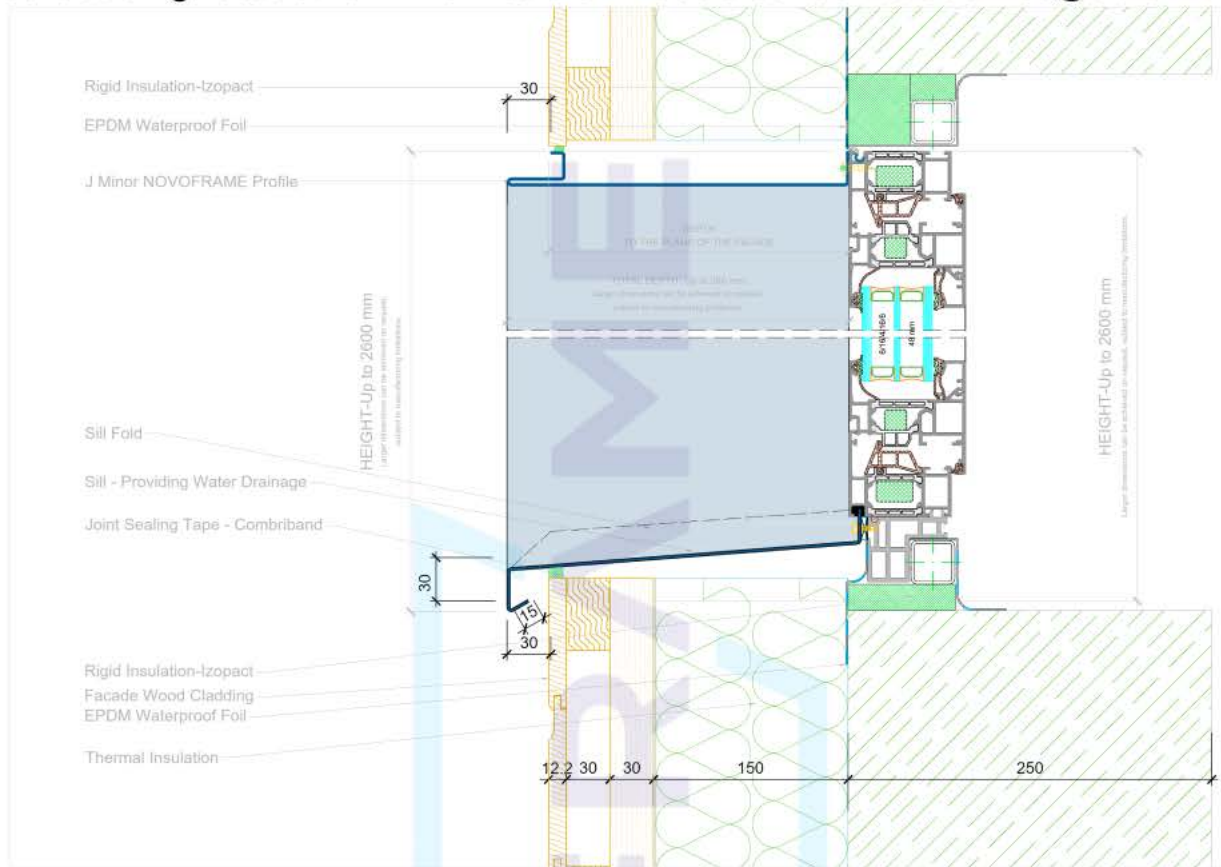


Brickwork Facade. For DWG files & 3D Models contact us at: office@aluform.ro



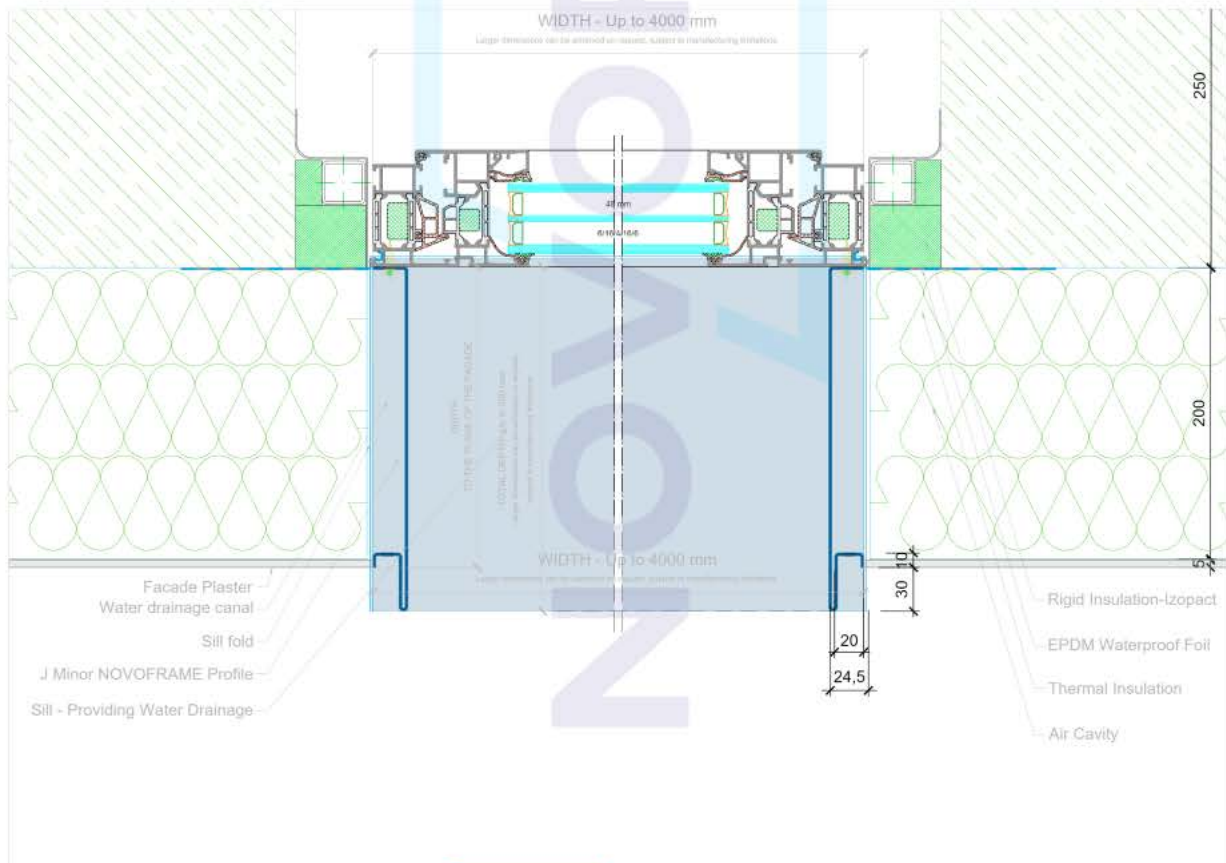
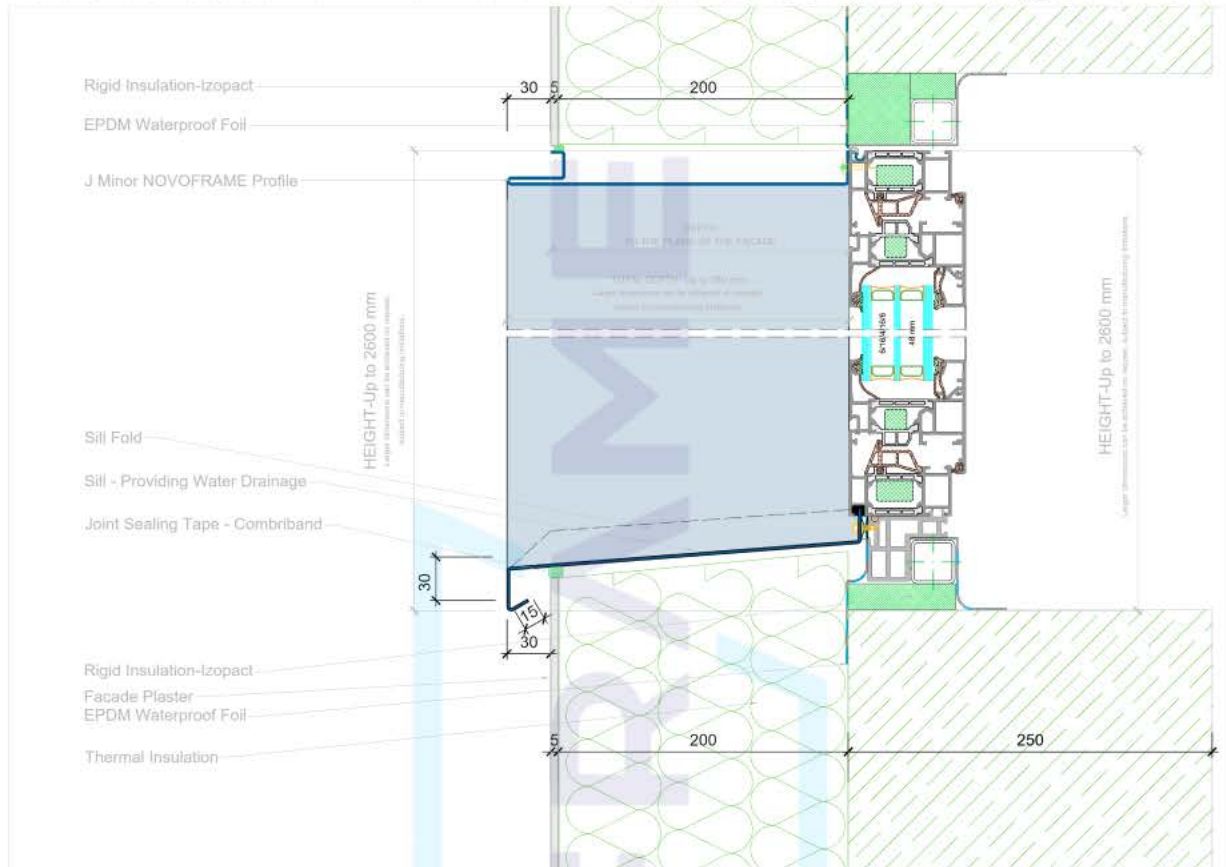
THE NEW
GENERATION WINDOW FRAME
SURROUND

Wood-cladding Facade. For DWG files & 3D Models contact us at: office@aluform.ro



THE NEW GENERATION WINDOW FRAME SURROUND

Plastered Facade. For DWG files & 3D Models contact us at: office@aluform.ro



THE NEW GENERATION WINDOW FRAME SURROUND

Solbanc/Rising Window Profile in Novoframe's Reveal Frame Installations:

For optimal performance in Novoframe's reveal frame installations, the use of a Solbanc Profile is recommended for two key reasons:

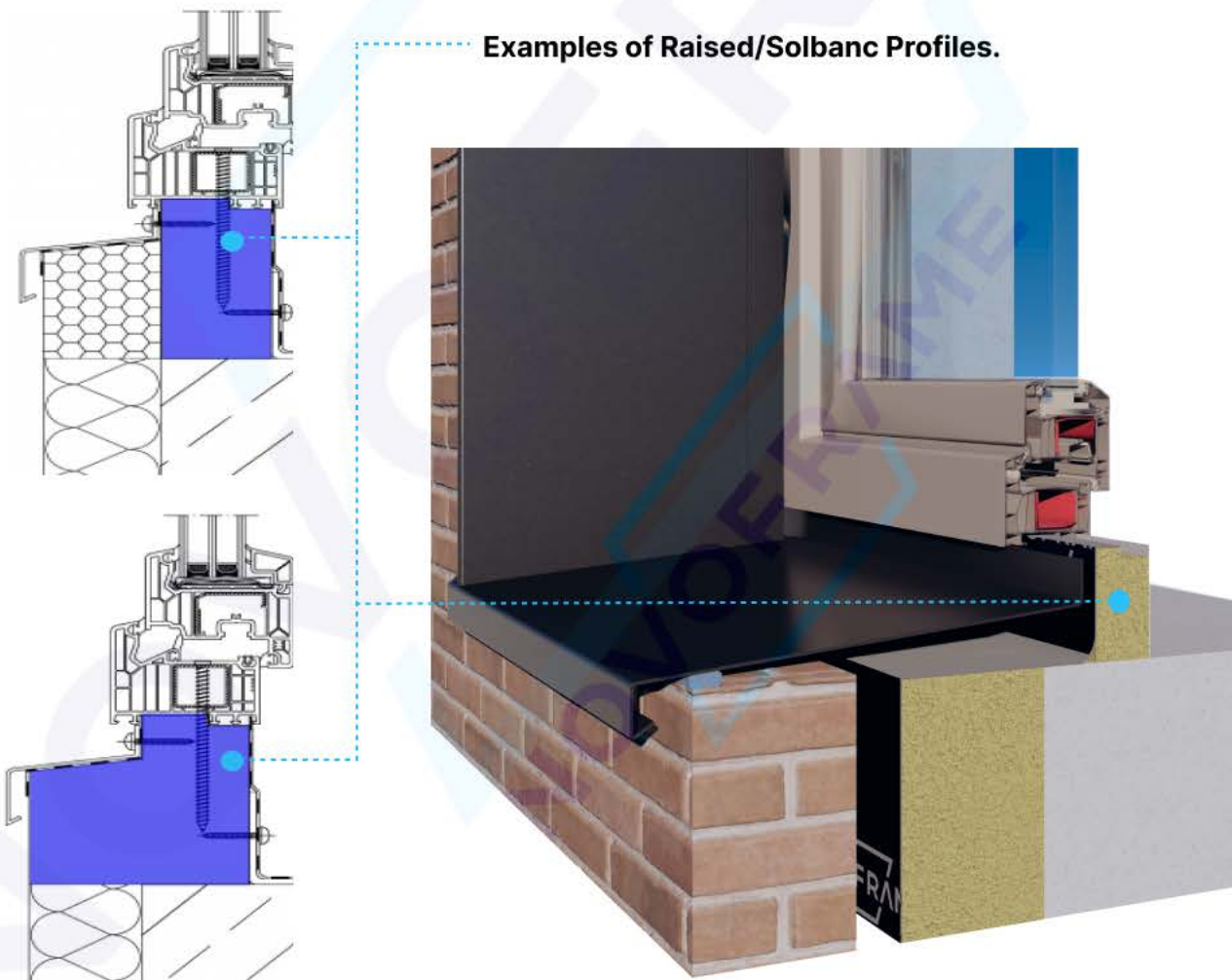
1. **Thermal Barrier:** It acts as an insulating layer between the window's bottom and the wall, enhancing energy efficiency.
2. **Water Drainage:** By elevating the window, the profile allows the sloping sill of the fully welded Novoframe's reveal frame system to drain water effectively towards the edge of the facade.

Incorporating a Solbanc Profile ensures seamless alignment and easy installation, making it a crucial component in Novoframe's reveal frame and sill systems.

We are also a provider of these **specialised insulating profiles**. For further details on types, specifications, and ordering, please visit the **IZOPACT** section of our website.

LIGHTWEIGHT RIGID INSULATION

Examples of Raised/Solbanc Profiles.



THE NEW GENERATION WINDOW FRAME SURROUND

ASSEMBLY INSTRUCTIONS:

II. Second Method: Installing the Novoframe's Reveal Frame through an F Profile

In situations where the façade cladding has already been installed and direct access to the window or door frame is not feasible, we offer an alternative method of installing our reveal frame system using an F Profile. This option also allows for minor adjustments to align the reveal frame with the existing facade cladding.

Preparation:

- Before installing the Novoframe reveal frame, make sure that the window, door, or sliding door has already been waterproofed and seamlessly integrated with the facade.
- Apply joint sealing tape (such as Compriband or a similar product) to the perimeter of the window where the Novoframe reveal frame will be installed.

Installation Steps:

1. The F Profiles are attached to the window or door frame, in a manner similar to our first installation method.
2. Position the Novoframe reveal frame system into the F Profiles and make necessary adjustments. The F profile allows for tolerance up to 15 mm.
3. Once properly adjusted, secure the Novoframe reveal frame to the F Profiles using blind rivets.

Additional Notes:

- If the sill is situated at a distance from the window or door's water drainage system, a drip profile can be added to ensure effective water drainage.

F PROFILE

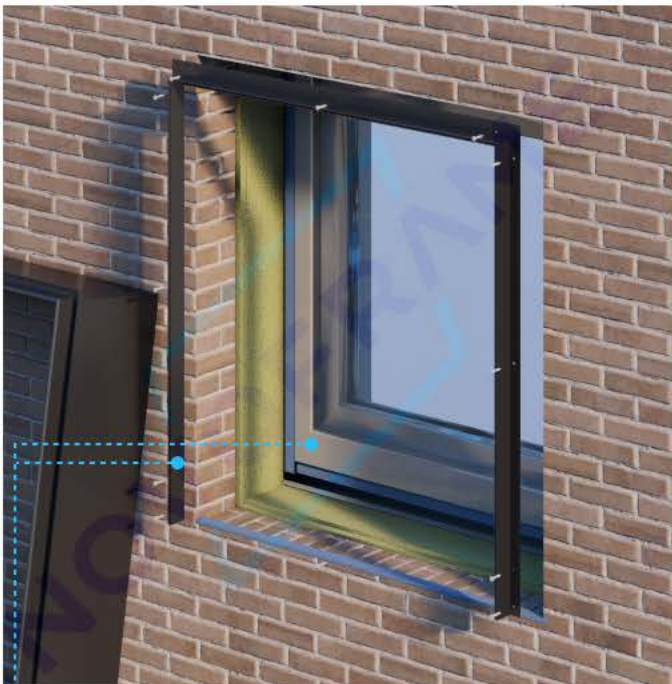
For DWG files & 3D Models contact us at: office@aluform.ro



1. NOVOFRAME's reveal frame is brought in to the site as a pre-fab product. It will be installed on the frame of the window, regardless of the window's material.



2. Apply joint sealing tape to the window perimeter where the NOVOFRAME reveal frame will be installed.



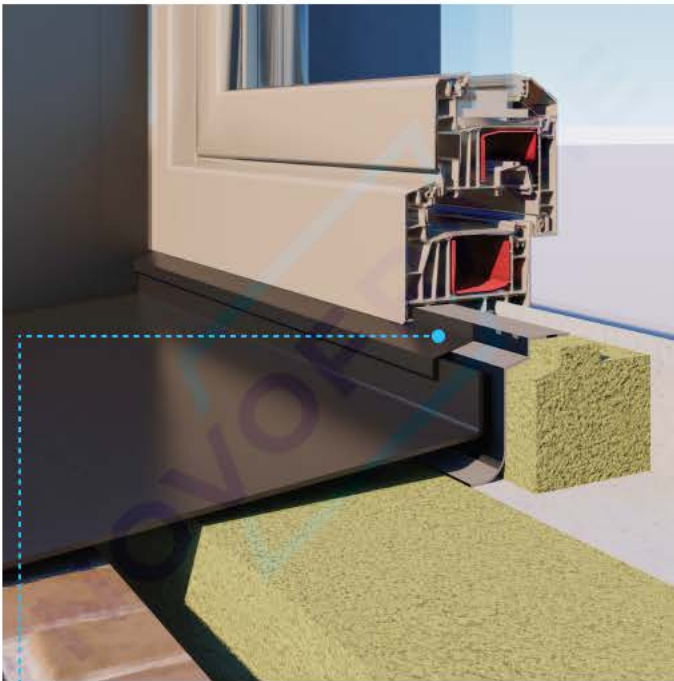
3. The F profiles are screwed onto the window or door frame. Fixing screws distance is the same as before.



4. The Novoframe reveal frame system is fitted to the F Profiles and adjusted. The F profile allows for tolerance up to 15 mm. After which it will be fixed to the F Profile with blind rivets.

F PROFILE

For DWG files & 3D Models contact us at: office@aluform.ro



5. In case the sill is further away from window or door water drainage system, a drip profile can be added to assure the water drainage.

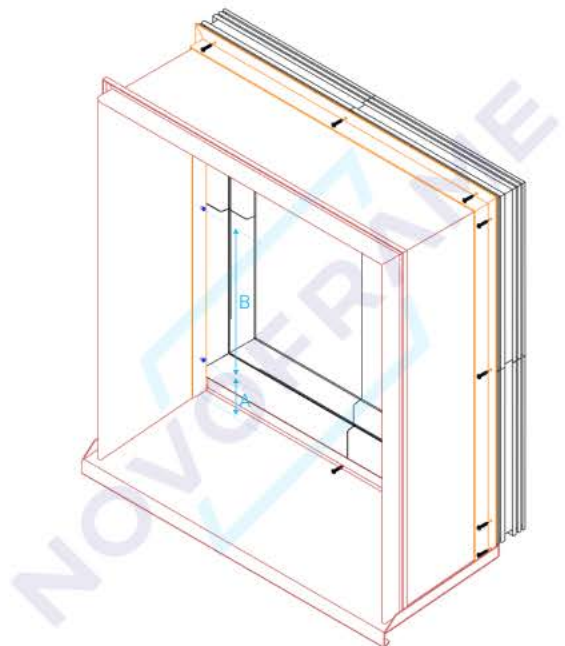


Figure . Axonometric Projection of NOVOFRAME system, fitted with F Profiles and blind rivets.

- A: > 50 mm (Distance from the edge of the F Profile to the fixing hole)
 B: 300-400 mm (Distance between fixing holes)
 C: >25 mm (Distance from the edge of the of the Novoframe to the fixing blind rivets)



6. You're all set!

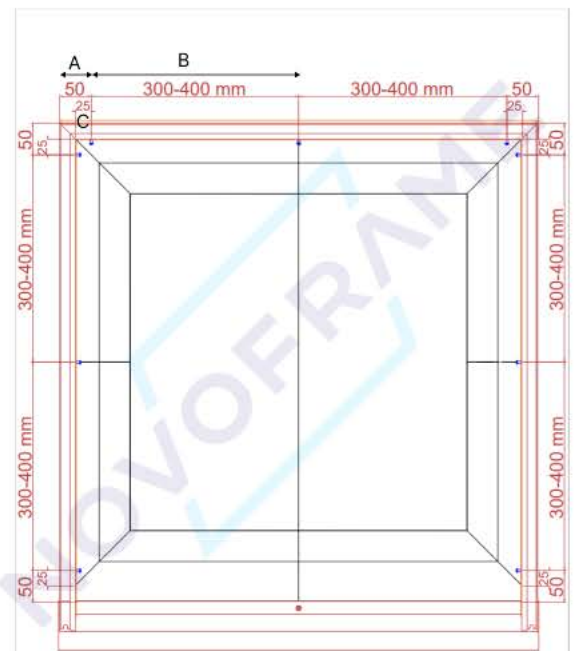
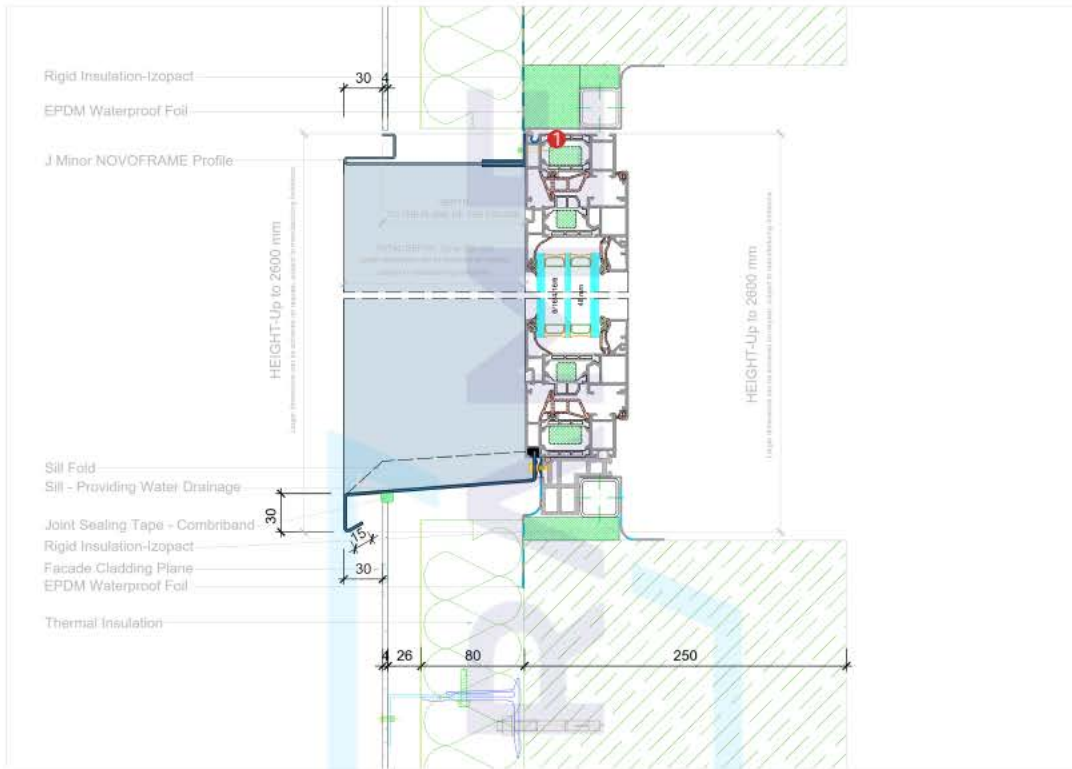


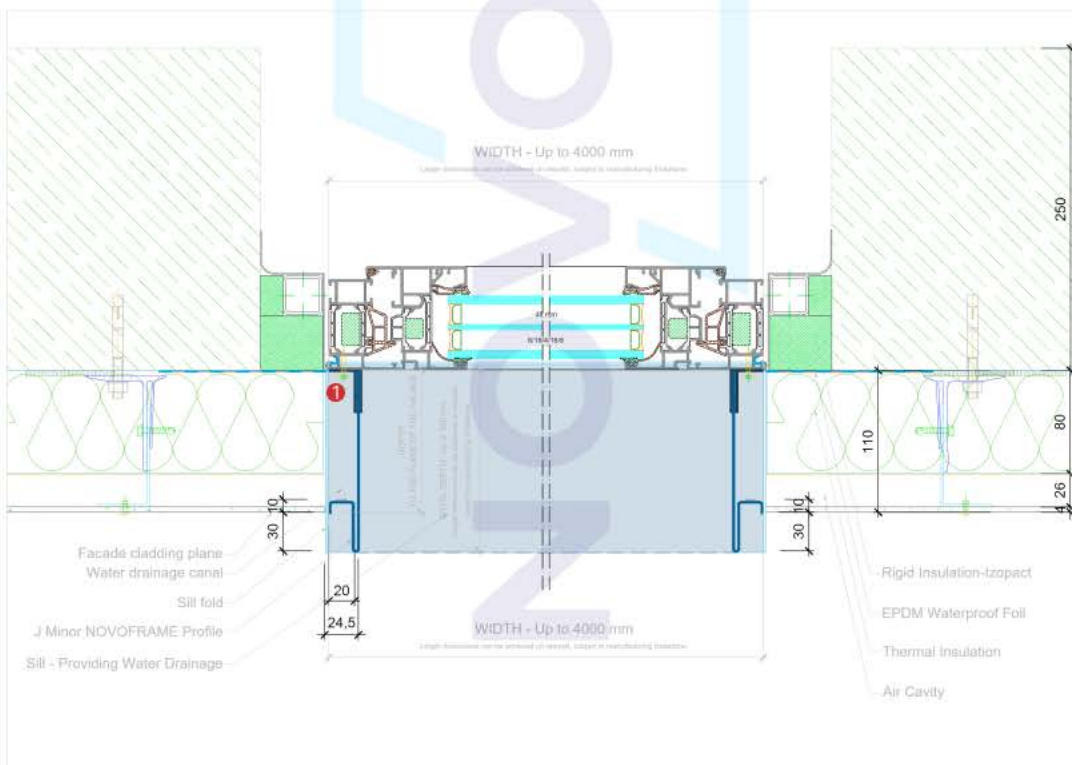
Figure . Elevation of NOVOFRAME reveal frame system, fitted with F Profiles and blind rivets, figuring dimensions.

F PROFILE

For DWG files & 3D Models contact us at: office@aluform.ro

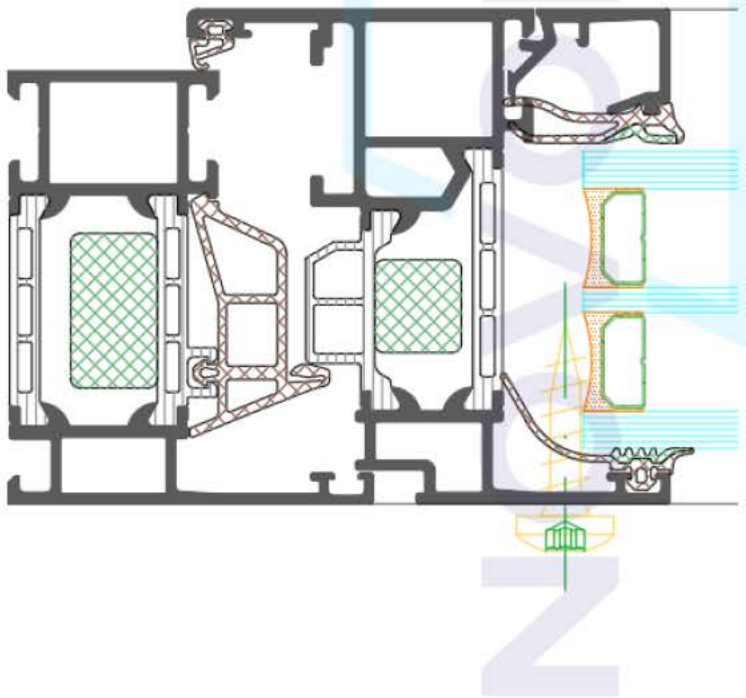
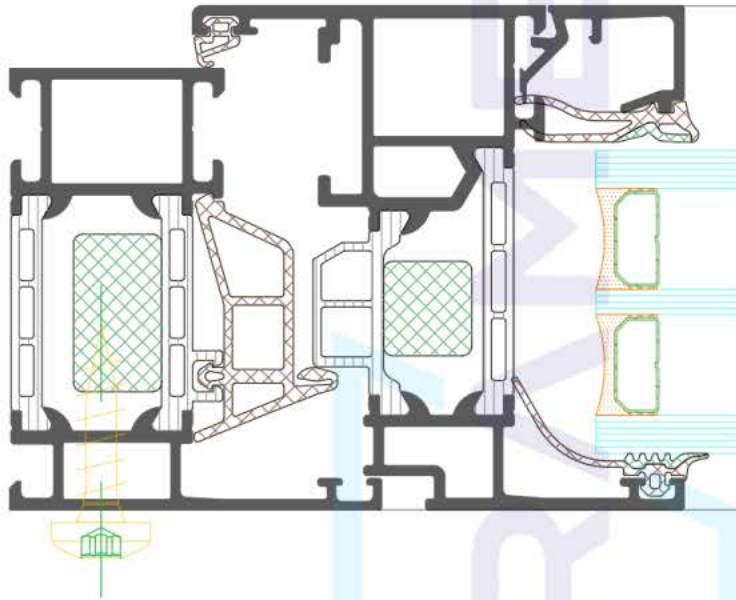


- 1 Install the F Profile by using screws to the window frame; this allows for the possibility of minimal adjustments

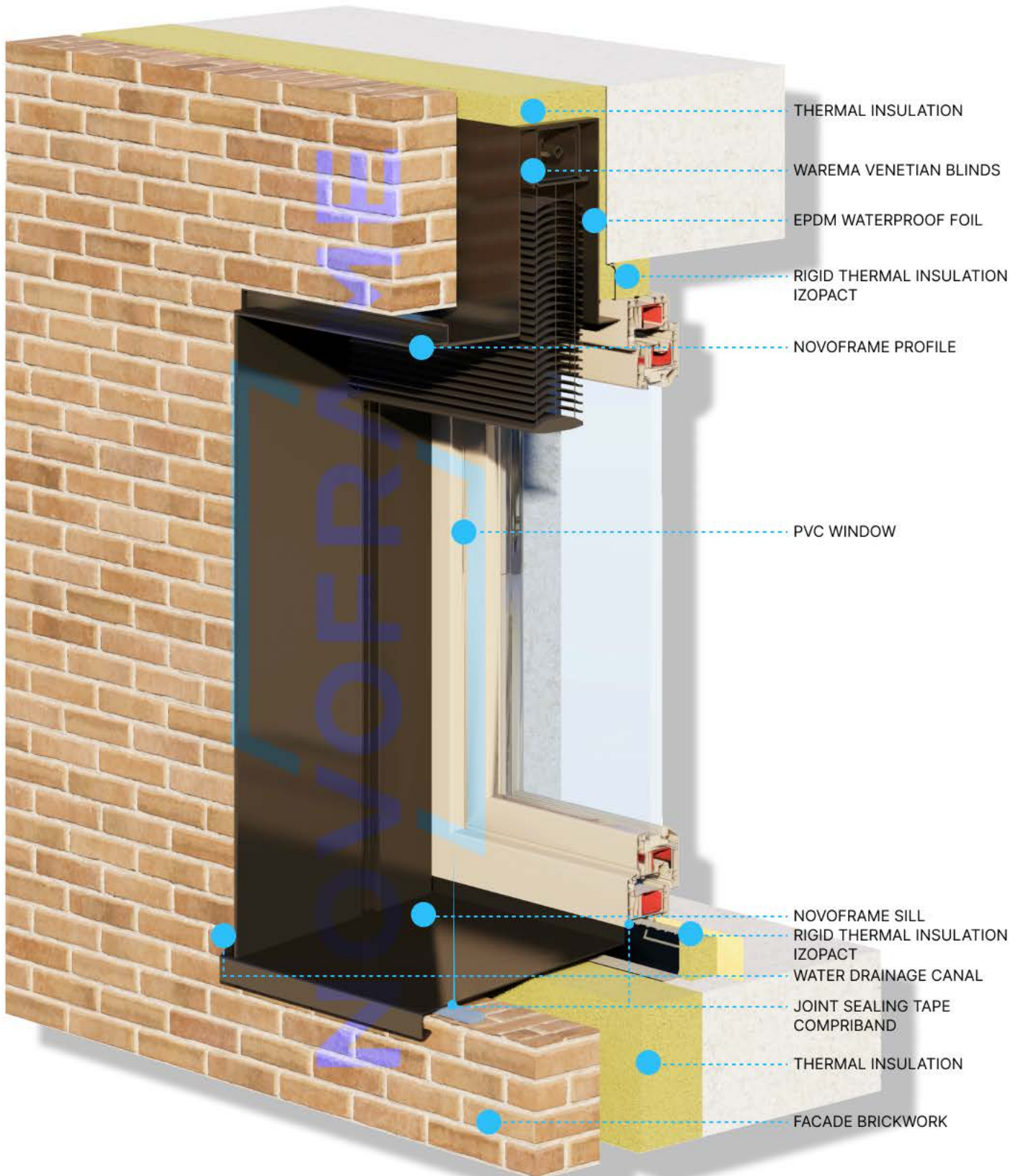


THE NEW GENERATION WINDOW FRAME SURROUND

Screw position in doors and windows

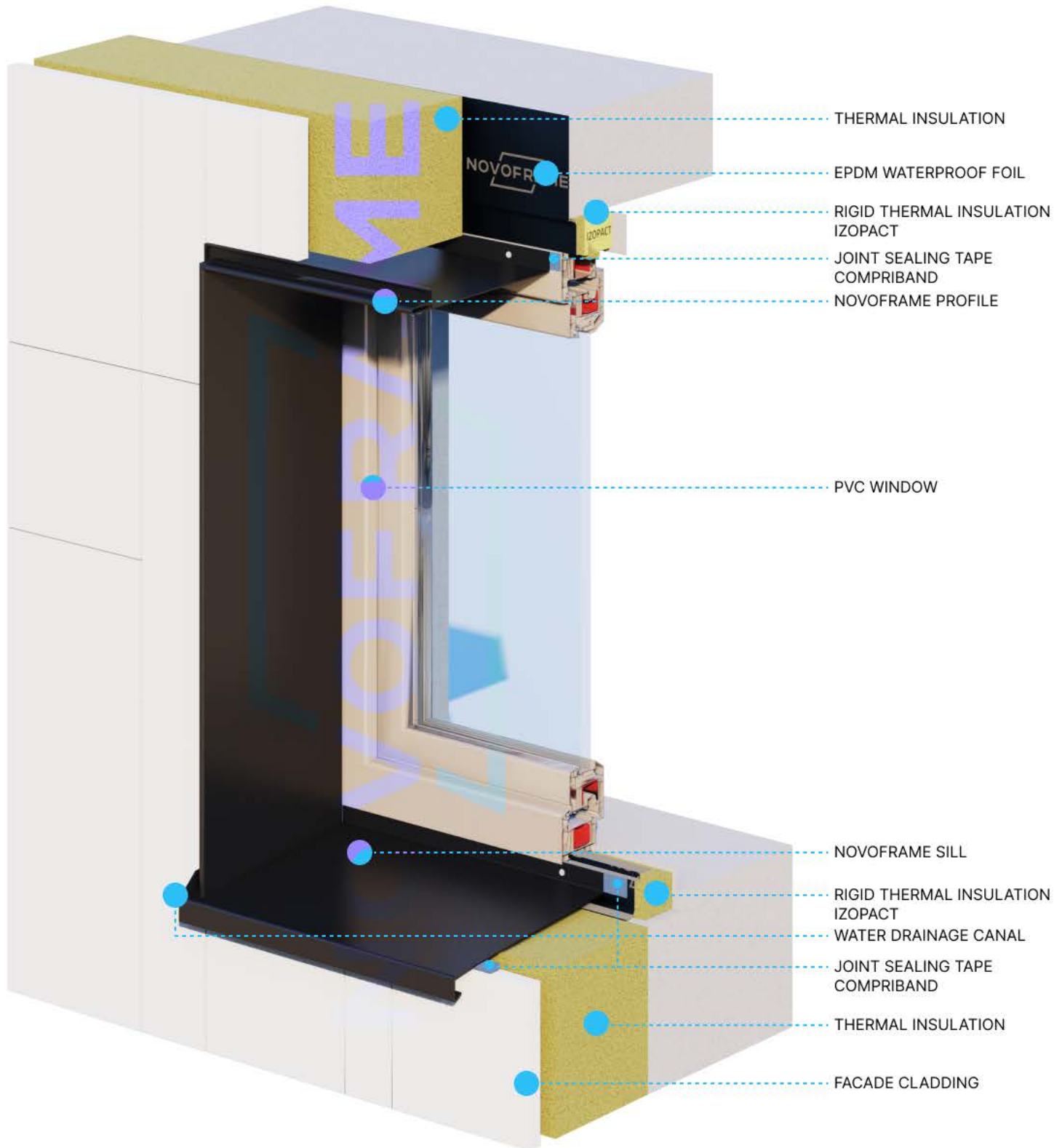


NOVOFRAME'S REVEAL FRAME WITH INCORPORATED SHADING SYSTEM



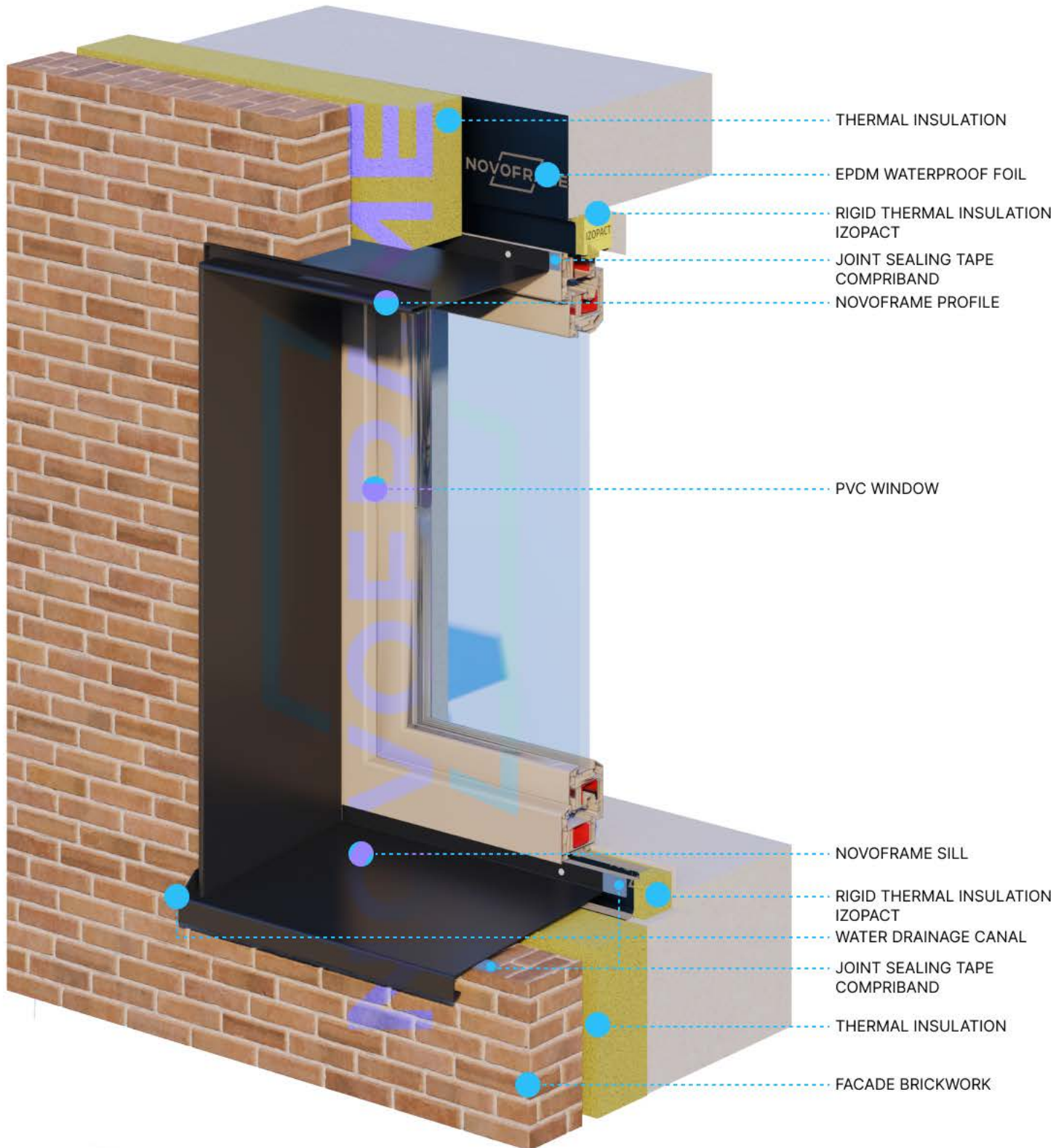
THE NEW
GENERATION WINDOW FRAME
SURROUND

J MINOR PROFILE 3D SECTION THROUGH VENTILATED FACADE



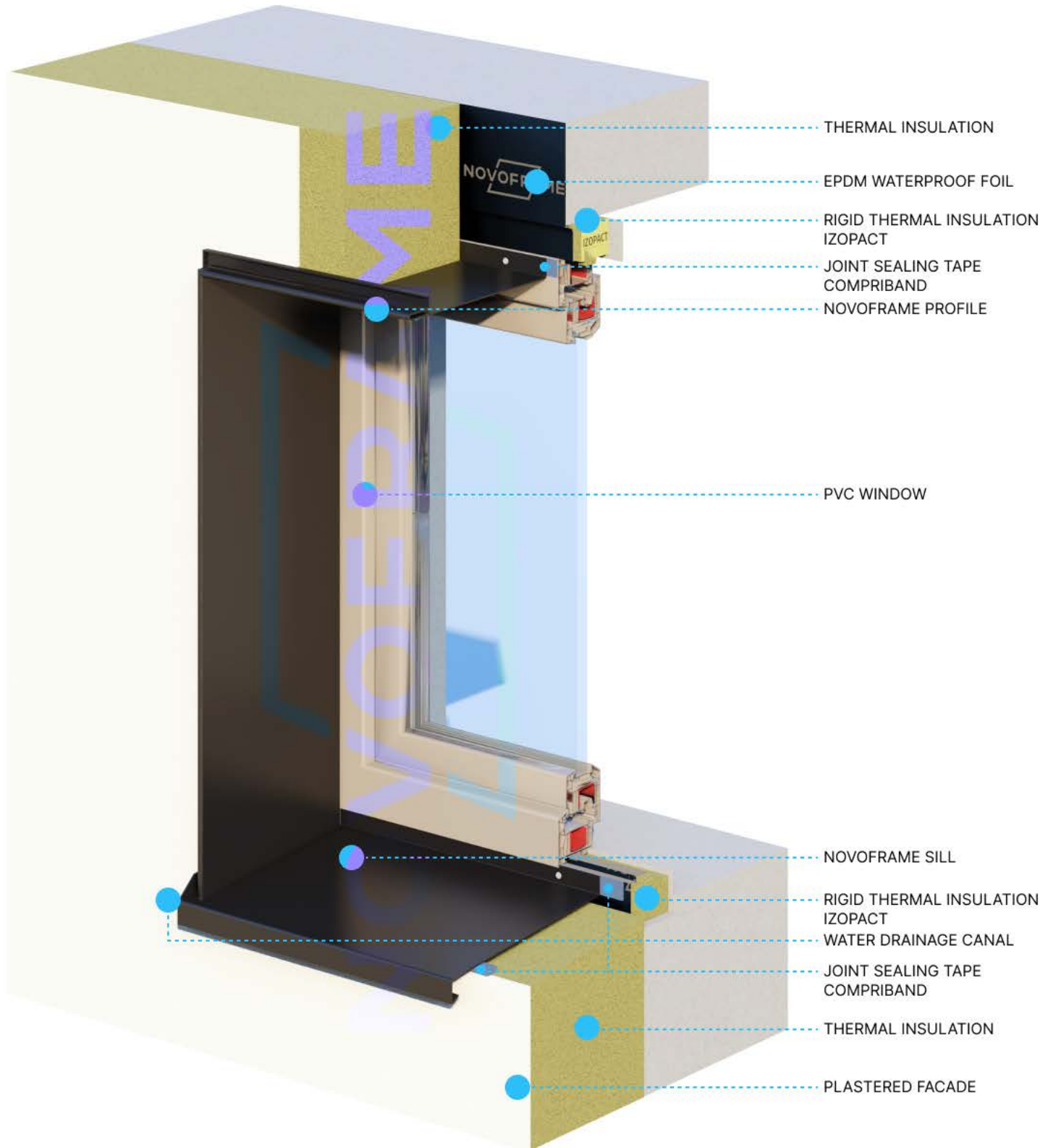
THE NEW GENERATION WINDOW FRAME SURROUND

J MINOR PROFILE 3D SECTION THROUGH BRICKWORK FACADE



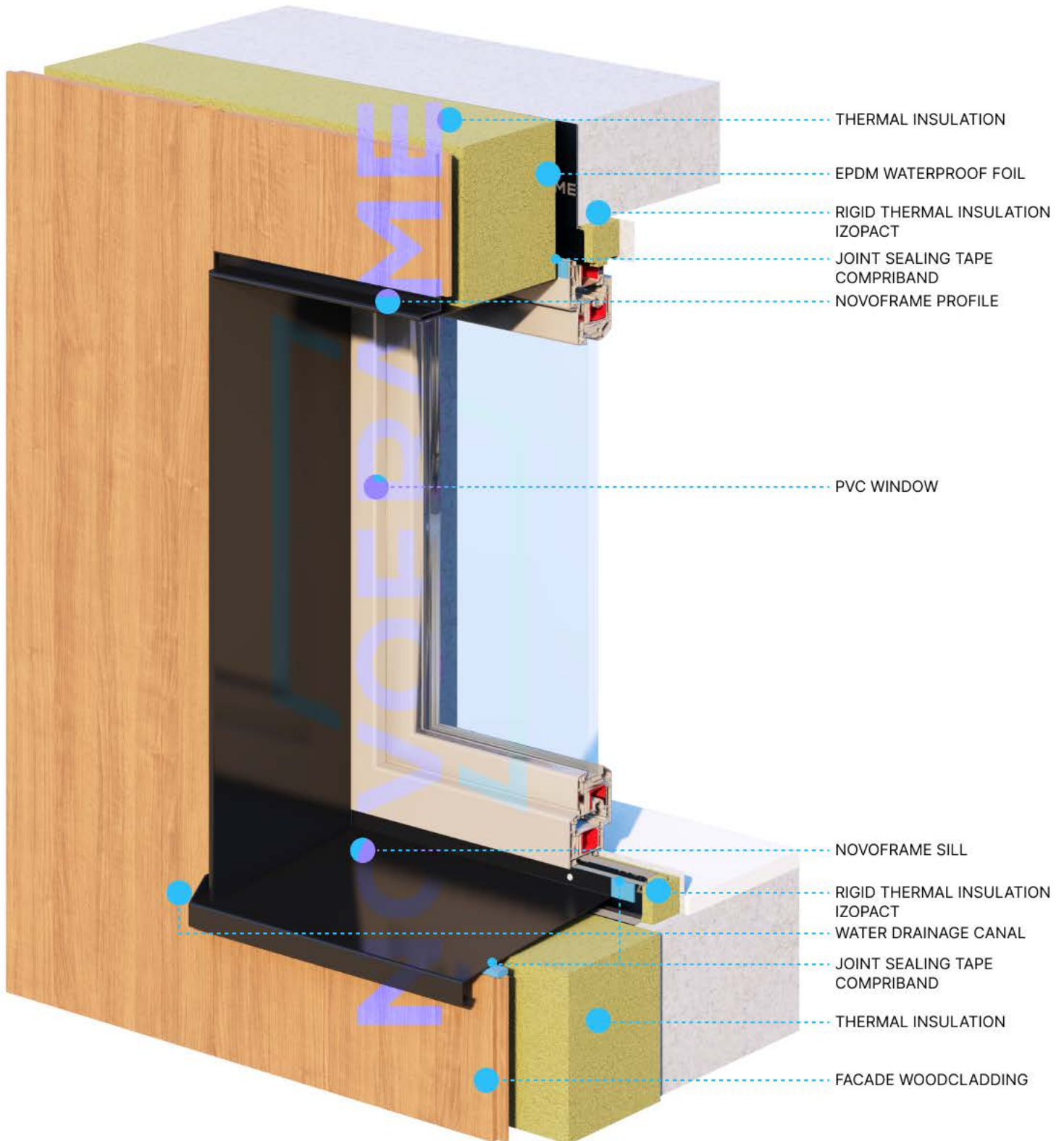
THE NEW GENERATION WINDOW FRAME SURROUND

J MINOR PROFILE 3D SECTION THROUGH PLASTERED FACADE



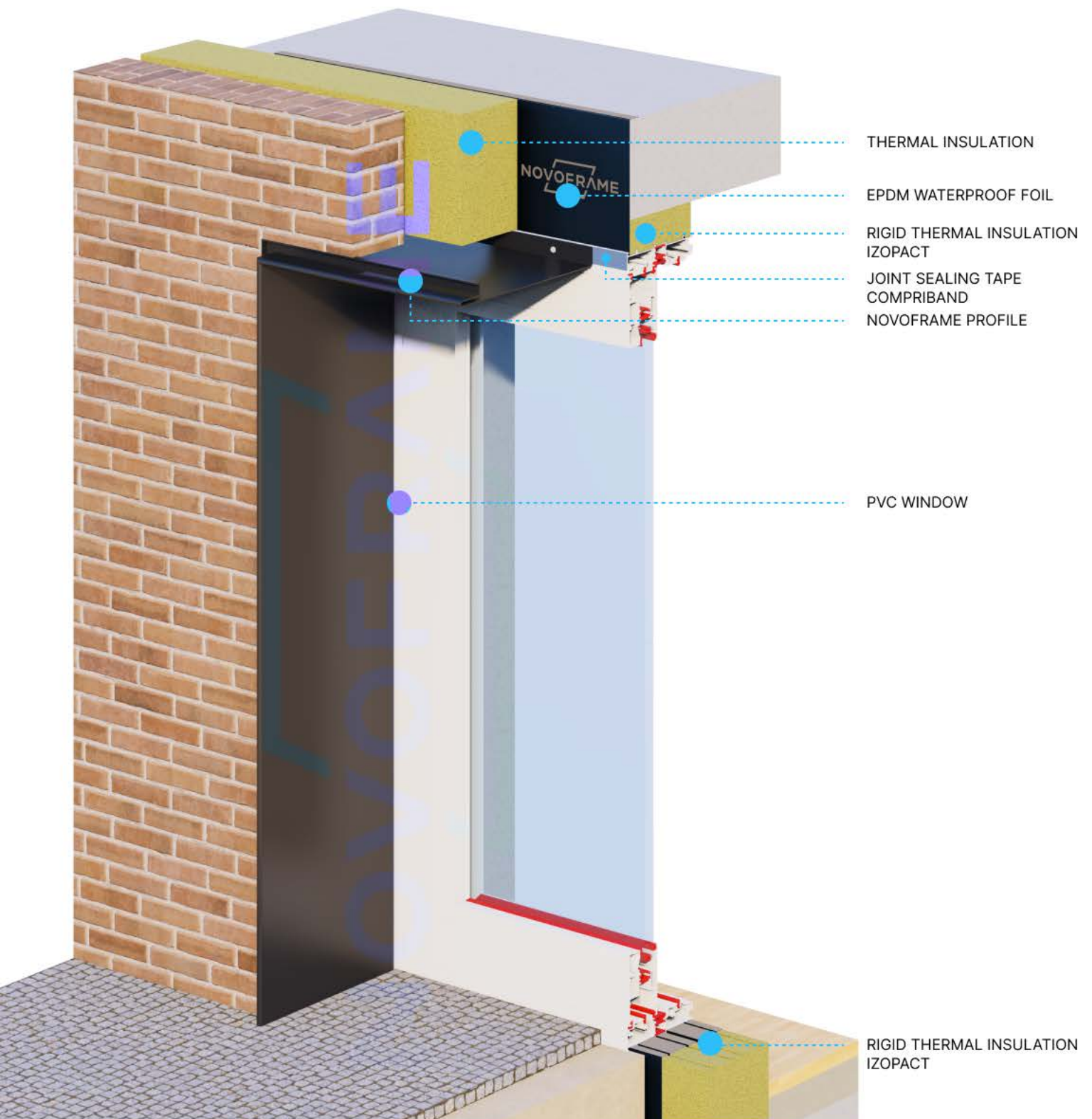
THE NEW GENERATION WINDOW FRAME SURROUND

J MINOR PROFILE 3D SECTION THROUGH WOOD CLADDING FACADE



THE NEW GENERATION WINDOW FRAME SURROUND

J MINOR PROFILE 3D SECTION THROUGH DOOR



THE NEW GENERATION WINDOW FRAME SURROUND



Why is NOVOFRAME REVEAL FRAME the ideal solution?

- **Tailored to Fit**

Customizable to the dimensions of each window or door in your project.

- **Superior Finish**

Perfect edge and finish for the window/door reveal in any facade.

- **Water Resistance**

Protection against water infiltration, drains rainwater externally, keeps the facade spotless.

- **Ready-To-Install**

Welded and delivered ready to install, our reveal frames can be fitted in just 15-20 minutes, significantly reducing on-site time and costs.

- **Shading System**

Has the capability to house the Warema shading system cassette and its guide rails, as well as the potential to serve as a shutter frame.

For Orders Contact us at:
office@aluform.ro

by **AluForm**

SC ALUFORM SRL, Bucuresti,
Sector 3, Sos. Garii Catelu, nr.
174, Corp C24, Etaj 1, Biroul 1
www.aluform.ro

Disclaimer for NOVOFRAME by ALUFORM SRL

All drawings, models, and brand mentions within this document are protected by the European Union Intellectual Property Office (EUIPO) and are the commercial and registered trademarks of Aluform SRL. Unauthorized reproduction, copying, use, adaptation, or any other form of distribution of these materials without the explicit permission of Aluform SRL is strictly prohibited. Any violations will be pursued to the fullest extent of the law.

While we strive for accuracy in our representations, the visuals in our catalogues and principle details serve merely as illustrations. Aluform SRL disclaims any responsibility for discrepancies or errors. Installers and installation companies must adapt to specific circumstances based on our guidelines.

Aluform SRL reserves the right to modify any information within any document without prior notice.

References or images of components not manufactured by Aluform SRL—including but not limited to window and door joinery, installation structures, insulation, and third-party structures—are purely indicative. For their appropriate application and use, verification from the respective manufacturer or supplier is crucial.

Drawings that emphasize specific accessories, tools, or fasteners not associated with Aluform SRL may require specialized tools or expertise. The onus is on the installer or installing company to obtain relevant information and implement the right procedures.

Actions, such as drilling, associated with components not from Aluform SRL's range, should always be corroborated with their respective manufacturers or suppliers to guarantee the components' effective performance.

Some structures may necessitate precise stability calculations, which fall under the purview of the installer or the installation firm.

All products or structures derived from our guidelines must comply with local regulations, laws, and standards.

The logo features the word "NOVOFRAME" in a bold, white, sans-serif font. A bright blue, stylized frame graphic, consisting of two parallel lines forming a trapezoidal shape, is positioned behind the text, partially overlapping the letters "V" and "O".

NOVOFRAME

For Orders Contact us at:
office@aluform.ro

THE NEW
GENERATION WINDOW FRAME
SURROUND

by **AluForm**