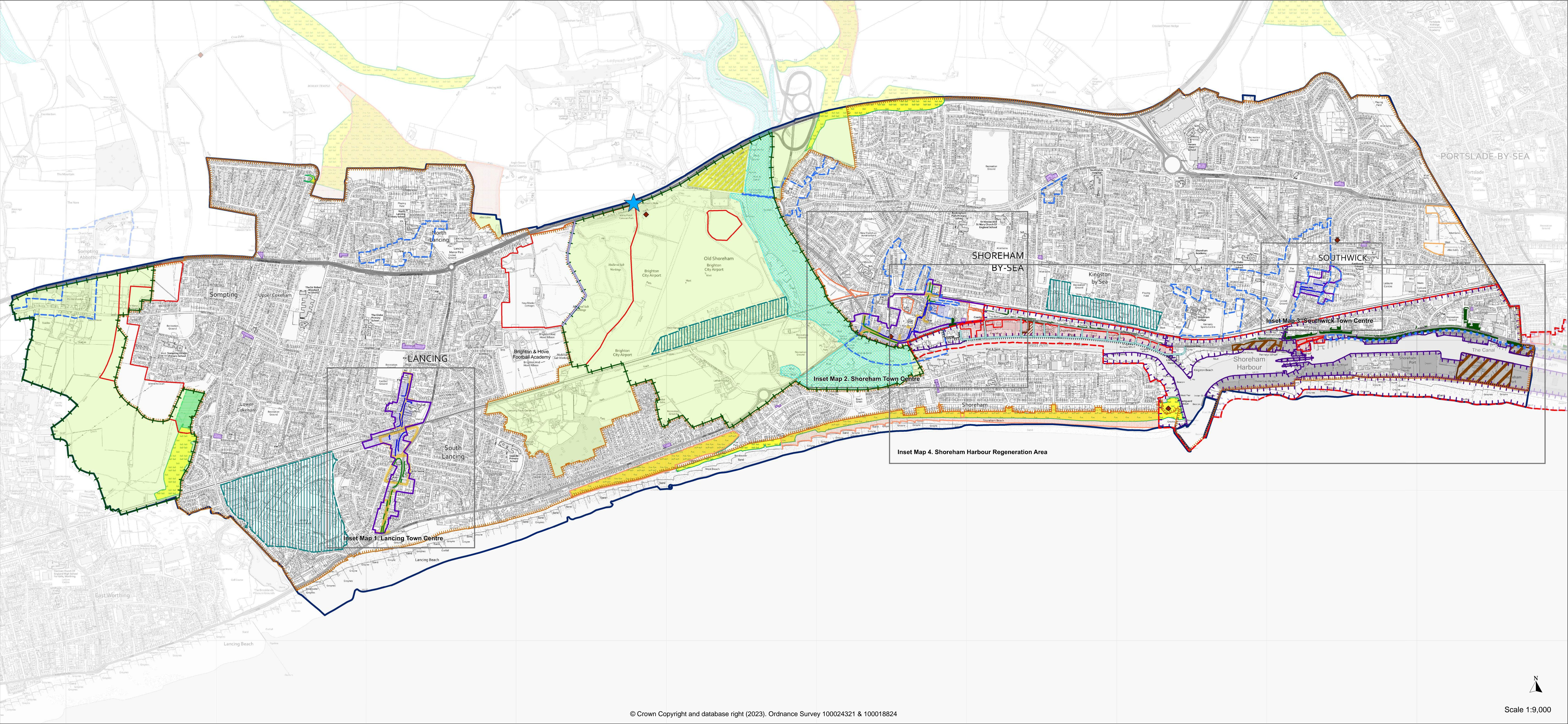


Adur Policies Map 2023 - Adur Local Plan and Shoreham Harbour Joint Area Action Plan



© Crown Copyright and database right (2023). Ordnance Survey 100024321 & 100018824

Scale 1:9,000

Legend

- Adur Local Plan (ALP) Area
- Built Up Area (BUA) - ALP Policy 2
- Indicative Built Up Area Boundary
- Strategic Site Allocations - ALP Policies 5, 6, 7
- Potential Development Sites (in or on edge of Shoreham Town Centre) - ALP Policy 11
- Protected Employment Sites - ALP Policy 25
- Eastbrook Development Opportunities - ALP Policy 12
- Shoreham Harbour Regeneration Area (Broad Location) - ALP Policy 8
- Site of Special Scientific Interest (SSSI) - ALP Policy 31
- Local Wildlife Site (LWS) - ALP Policy 31
- Local Nature Reserve (LNR) - ALP Policy 31
- Proposed Extension to LWS - ALP Policy 6
- Local Green Gap - ALP Policy 14
- Countryside - ALP Policy 13
- Ricardo Boundary - ALP Policies 4, 13
- Safeguarded Wharves - WSMP Policy M10
- Temporary Safeguarded Wharves - WSMP Policy M10
- Conservation Areas - ALP Policies 16, 17
- Town Centre Boundaries - ALP Policy 27
- Primary Shopping Area - ALP Policy 27
- Primary Retail Frontages - ALP Policies 9, 11, 12, 27
- Secondary Retail Frontages - ALP Policies 9, 11, 27
- Local Shopping Parades - ALP Policy 27
- Proposed Roundabout (Indicative) - ALP Policies 5, 7
- Town Centre Blocks (Numbered) - ALP Policies 9, 11
- Scheduled Ancient Monuments
- Waterfront Pedestrian and Cycle Route - JAAP Policies SH5, SH8, CA7
- New / Upgraded Flood Defences - JAAP Policies SH6, CA7
- New / Upgraded Port Access Road - JAAP Policy CA5
- Site Allocations (Shoreham Harbour) (Numbered) - JAAP Policies SH3, SH4, CA5, CA7
- Character Areas (Shoreham Harbour) (Numbered) - ALP Policy 8, JAAP Policies CA1, CA4, CA5, CA6, CA7
- Green Corridor - JAAP Policies SH7, SH8, CA5
- Port (Operational) - JAAP Policies SH2, CA1, CA5, CA6



ALP - Adur Local Plan 2017
 JAAP - Shoreham Harbour Joint Area Action Plan 2019
 WSMP - West Sussex Joint Minerals Local Plan 2018