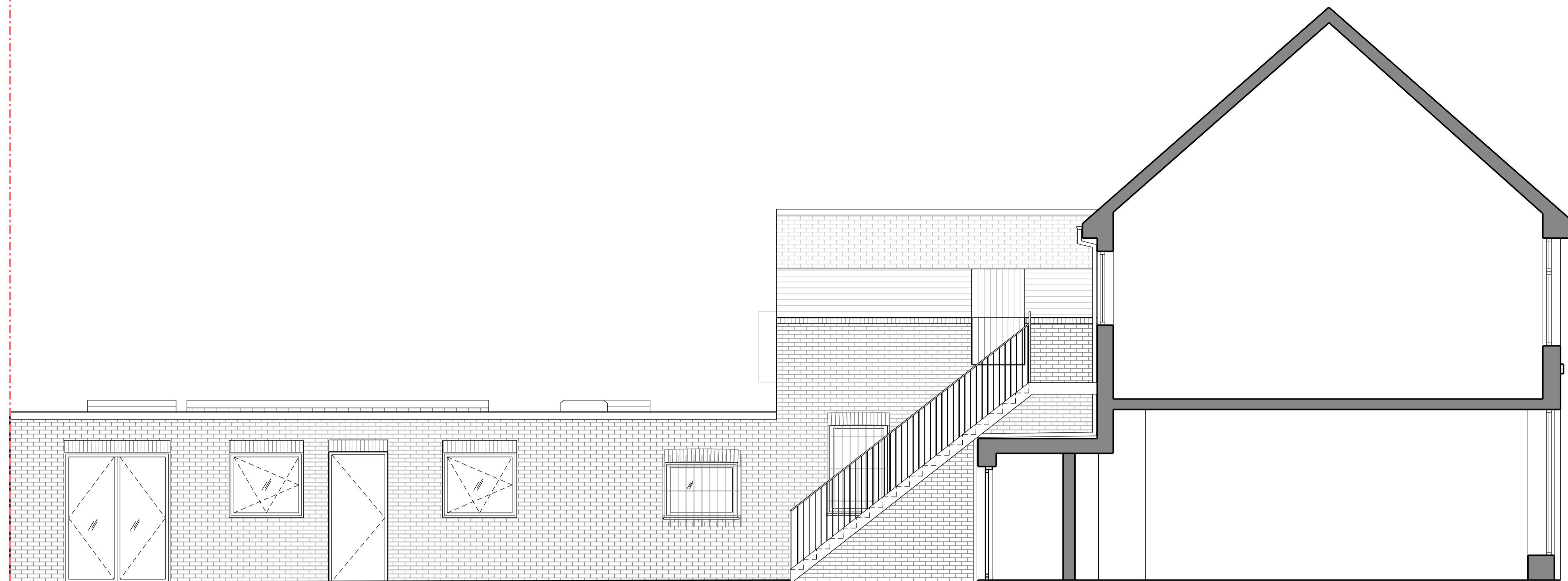


Ridge = 8.585  
 2FC = 8.430

Eaves = 5.80

Parapet = 2.890  
 GFC = 2.610

GF = 0.00



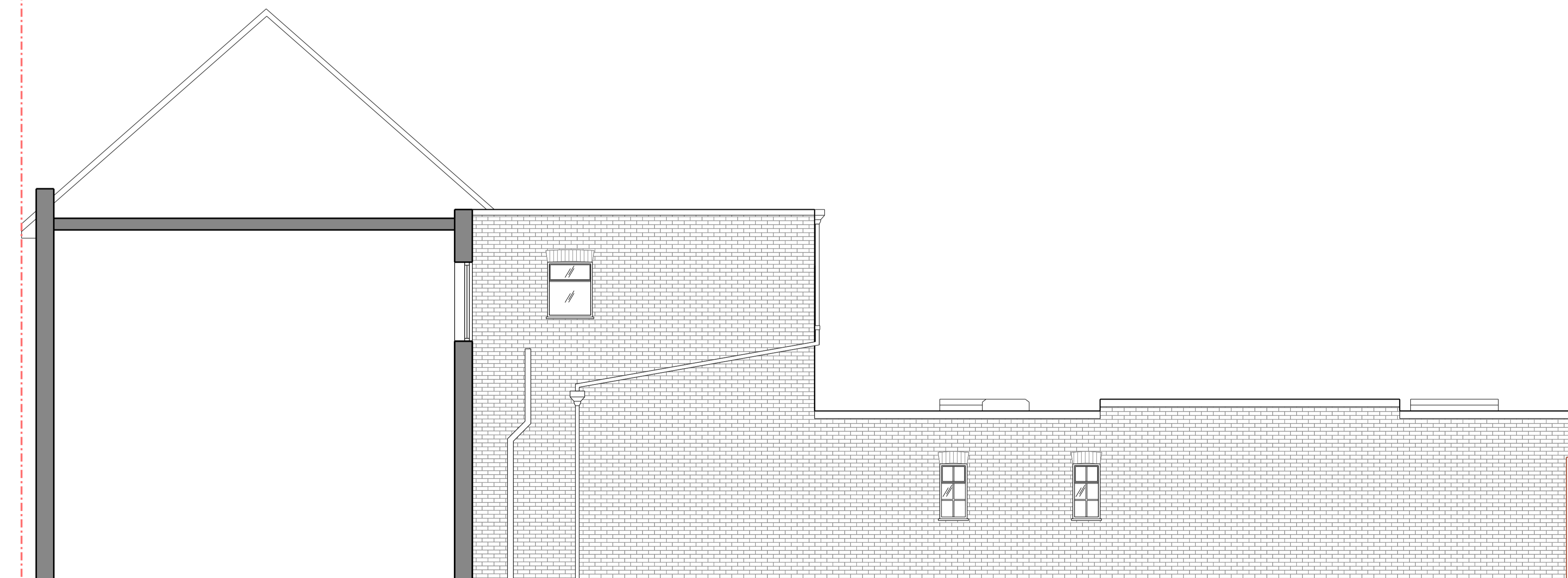
Existing South Elevation

Ridge = 8.585  
 2FC = 8.430

Parapet = 5.80

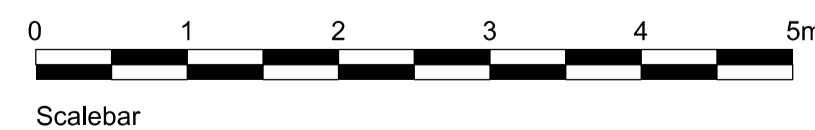
Parapet = 2.890  
 GFC = 2.610

GF = 0.00



Existing North Elevation

**KJC architects**  
 2 Grove Cottage  
 Carshalton, SM5 3BD  
 +44 (0) 20 3745 4405



--- Area to be removed/demolished

15 - 17 Broadwater, Street West, BN14 9BT

Existing Elevations

INFORMATION 1:50@A1 or 1:100@A3 18.03.24

Project No	Type	Blg	Number	Zone/Lvl	Rev
2408	P	01	0021	ZXX	02

Notes:  
 1. For planning only  
 2. Contractor to Check all dimensions and report omissions and errors to the Architect

No	Revision	Date	Initial	Chkd
02	Issued for Planning	12.09.24	GA	KJC
01	Issued for Planning	18.07.24	GA	KJC