

Ridge = 8.585
 2FC = 8.430

Eaves = 5.80

Parapet = 2.890
 GFC = 2.610

GF = 0.00



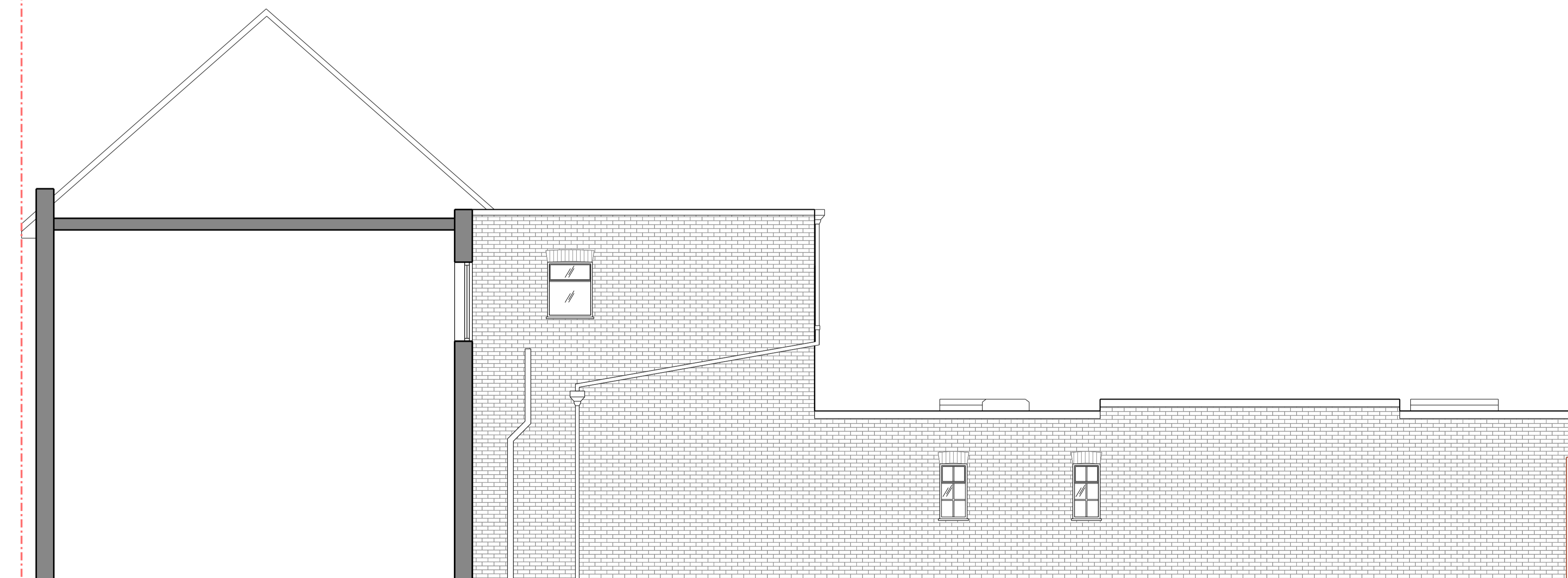
Proposed South Elevation

Ridge = 8.585
 2FC = 8.430

Parapet = 5.80

Parapet = 2.890
 GFC = 2.610

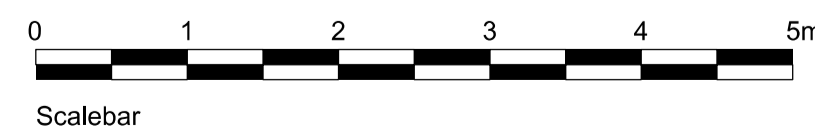
GF = 0.00



Proposed North Elevation

KJC
 architects

2 Grove Cottage
 Carshalton, SM5 3BD
 +44 (0) 20 3745 4405



--- Area to be removed/demolished

15 - 17 Broadwater, Street West, BN14 9BT
 Proposed Elevations

INFORMATION 1:50@A1 or 1:100@A3 18.03.24

Project No	Type	Blg	Number	Zone/Lvl	Rev
2408	P	01	0221	ZXX	02

Notes:
 1. For planning only
 2. Contractor to Check all dimensions and report omissions and errors to the Architect

No	Revision	Date	Initial	Chkd
02	Issued for Planning	12.09.24	GA	KJC
01	Issued for Planning	18.07.24	GA	KJC