

## 7.2. Scale against existing context

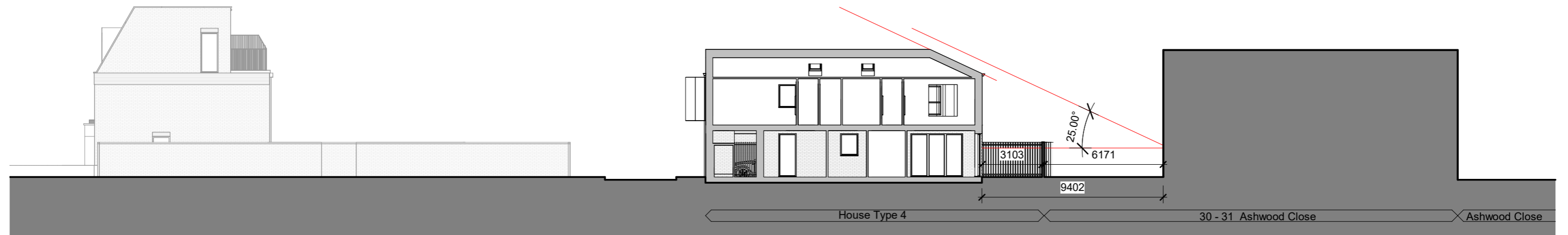
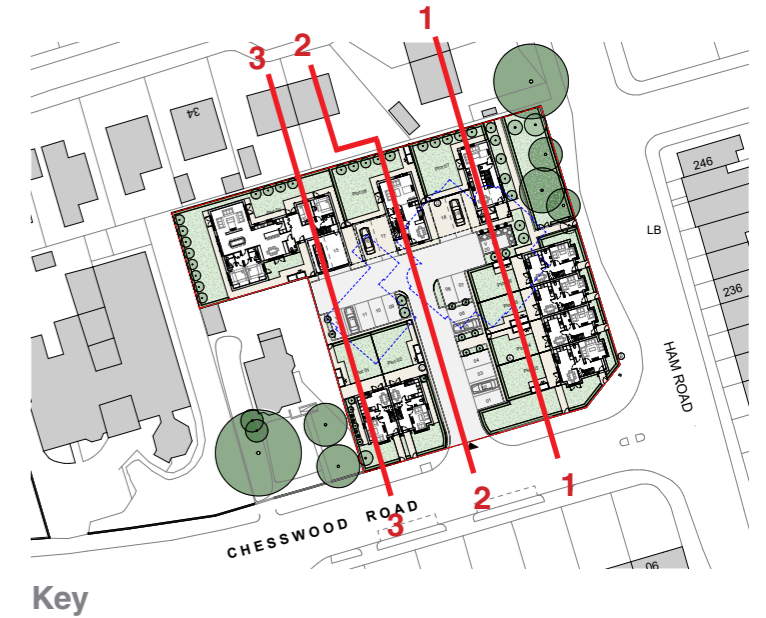
The proposed development has been carefully designed with due regard to the guidelines set out in the BRE publication “Site Layout Planning for Daylight and Sunlight: A Guide to Good Practice”. The scale, massing, and orientation of the buildings have been developed to ensure that acceptable levels of daylight and sunlight are maintained both within the new homes and for neighbouring properties.

Internal layouts have been optimised to maximise natural light, with primary living spaces positioned to benefit from favourable aspects. Window placement and façade articulation have been considered to enhance daylight penetration while mitigating potential issues such as overshadowing or excessive solar gain.

For neighbouring properties, the scheme has been tested to ensure that it does not result in unacceptable losses of light or breaches of BRE thresholds. Where potential impacts were identified, the massing has been adjusted to minimise overshadowing, particularly

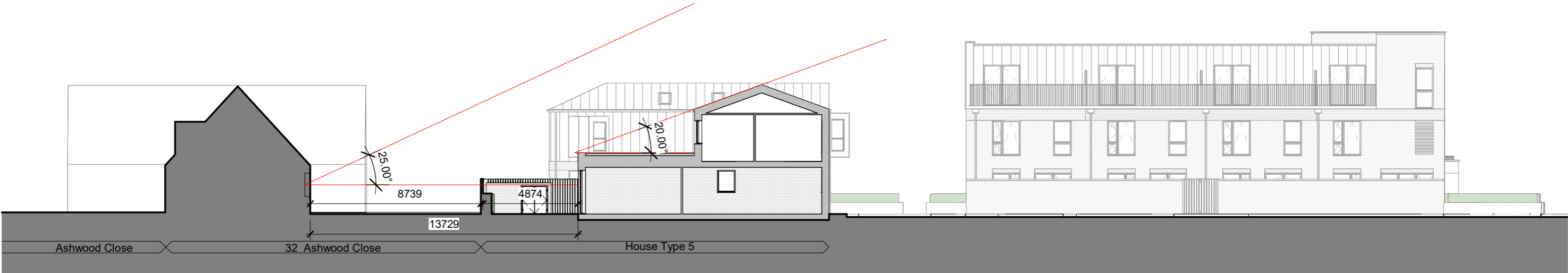
to gardens and windows serving habitable rooms.

Overall, the design represents a balanced response to site opportunities and constraints, delivering a high standard of amenity for future residents while safeguarding the daylight and sunlight levels of surrounding buildings. In this way, the proposal supports sustainable, healthy living environments and meets the expectations of good urban design.

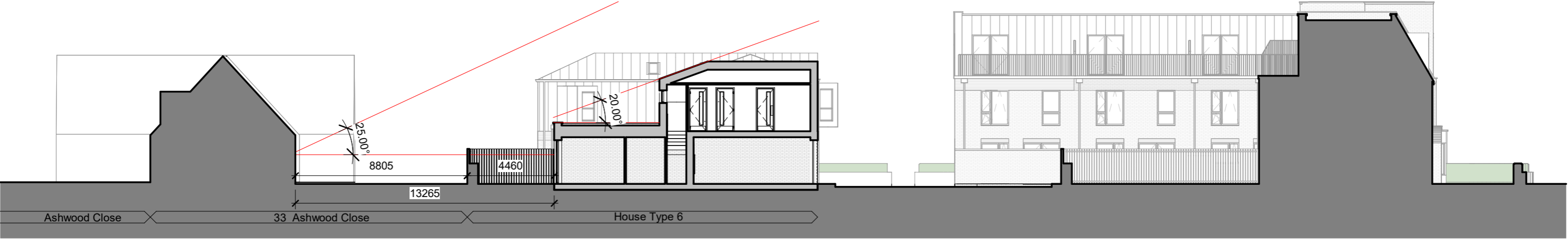


Section 1 through proposed House Type 4 and neighbouring building at Ashwood Close

# 7.3. Scale against existing context



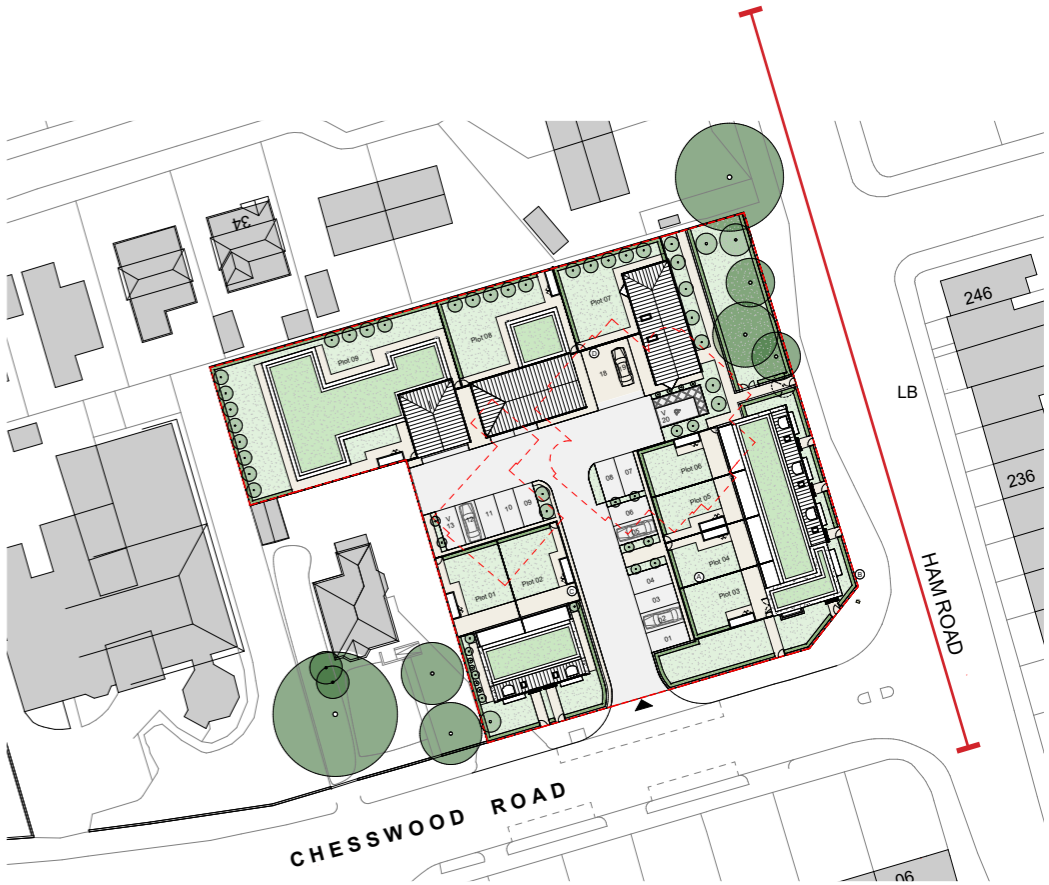
Section 2 through proposed House Type 5 and neighbouring building at Ashwood Close



Section 3 through proposed House Type 6 and neighbouring building at Ashwood Close

# 7.4. Scale and Design

The proposed material palette takes its cues from the 1960s church on site, drawing on its buff stonework and roof tones to create a respectful, contemporary response. The selected brickwork echoes the church's texture and warmth without direct imitation, fostering continuity between old and new. Similarly, the zinc cladding reflects the church's subdued roof tones, offering a modern yet sympathetic solution. Overall, the design acknowledges the site's ecclesiastical heritage while delivering a refined, contemporary residential character.



Following advice from planning officers, the scale and height of the end unit have been increased to create a corner-turning presence at the junction of Chesswood Road and Ham Road



**Street Scene 1 - Ham Road**

The new proposal follows the established typology of Ham Road, featuring a series of terraced houses with bay fronts and rooms within the roof space.

# 7.5. Scale and Design

The proposed material palette takes its cues from the 1960s church on site, drawing on its buff stonework and roof tones to create a respectful, contemporary response. The selected brickwork echoes the church's texture and warmth without direct imitation, fostering continuity between old and new. Similarly, the zinc cladding reflects the church's subdued roof tones, offering a modern yet sympathetic solution. Overall, the design acknowledges the site's ecclesiastical heritage while delivering a refined, contemporary residential character.



**Street Scene 2 - Chesswood Road**

The new proposal follows the established typology of Chesswood Road, featuring a series of semi-detached and detached houses with bay fronts and rooms within the roof space.

Following advice from planning officers, the scale and height of the end unit have been increased to create a corner-turning presence at the junction of Chesswood Road and Ham Road

## 7.6. Scale and Design

The proposed material palette takes its cues from the 1960s church on site, drawing on its buff stonework and roof tones to create a respectful, contemporary response. The selected brickwork echoes the church's texture and warmth without direct imitation, fostering continuity between old and new. Similarly, the zinc cladding reflects the church's subdued roof tones, offering a modern yet sympathetic solution. Overall, the design acknowledges the site's ecclesiastical heritage while delivering a refined, contemporary residential character.

The design of these two-storey family homes, featuring shallow roof pitches, creates a cohesive collection with a shared architectural language. Subtle variations distinguish the homes on Ham Road from those on Chesswood Road, giving each group a distinct yet harmonious identity. The low roof pitch also helps to reduce the perceived scale and massing of the homes when viewed within the context of the existing surrounding development.



**Street Scene 3 - House Type 4-6**

single storey hidden home with a grass roof, positioned to limit impact on neighbouring properties

Unit 7's east elevation frames the memorial garden, providing a sense of enclosure and privacy.

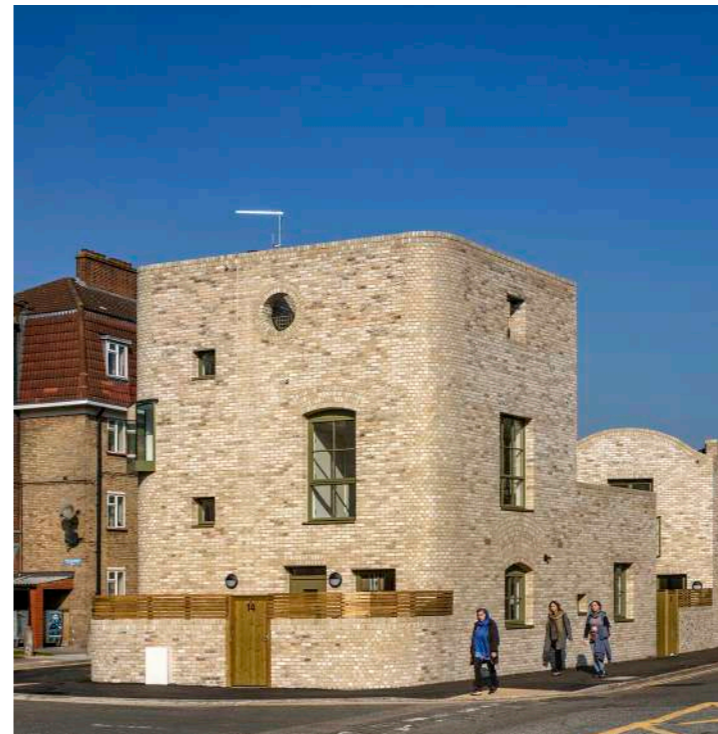
## 7.7. Materials & Precedent

The proposed material palette has been carefully developed as a considered and respectful response to the architectural character of the existing 1960s church. Rather than replicating the wider context, which is varied and less cohesive in material expression, the design draws inspiration from the church's distinctive use of buff stonework and roof material tone to establish a clear visual and conceptual link with the site's ecclesiastical heritage.

The selected brickwork references the tone, texture, and modular rhythm of the original church masonry. While not a direct match, the brick chosen echoes its muted warmth and subtle variation, providing continuity and a sense of familiarity. This creates a visual dialogue between the retained and new elements on site, reinforcing a sense of place and shared identity.

Similarly, the roofscape of the proposed buildings reflects the tonal qualities of the church's roof, using contemporary materials that complement rather than mimic the original. The choice of the brown/bronze zinc cladding responds to the subdued roof finish of the church, offering a quiet dignity appropriate to the site's former use but with a modern contemporary solution.

This approach ensures that the new development is grounded in the site's history and material language, without resorting to pastiche. It respects the church's architectural intent while translating its qualities into a refined, contemporary residential expression.



# 7.8. Materials & Precedent



- Material Key:**
- 1. Buff Brick Work
  - 2. Buff Brick Work Soldier Course
  - 3. Bronze Colour Metal Cladding
  - 4. Bronze Colour Metal Standing Seam Cladding
  - 5. Bronze Colour Metal Standing Seam Roof
  - 6. Bronze Colour Metal Window Frames
  - 7. Bronze Colour Metal Door Frames
  - 8. Weathered Coping Stone



# 7.9. Materials & Precedent



**Material Key:**

- 1. Buff Brick Work
- 2. Buff Brick Work Soldier Course
- 3. Bronze Colour Metal Cladding
- 4. Bronze Colour Metal Standing Seam Cladding
- 5. Bronze Colour Metal Standing Seam Roof
- 6. Bronze Colour Metal Window Frames
- 7. Bronze Colour Metal Door Frames
- 8. Weathered Coping Stone



# 7.10. Materials & Precedent

**Material Key:**

- 1. Buff Brick Work
- 2. Buff Brick Work Soldier Course
- 3. Bronze Colour Metal Cladding
- 4. Bronze Colour Metal Standing Seam Cladding
- 5. Bronze Colour Metal Standing Seam Roof
- 6. Bronze Colour Metal Window Frames
- 7. Bronze Colour Metal Door Frames
- 8. Weathered Coping Stone

