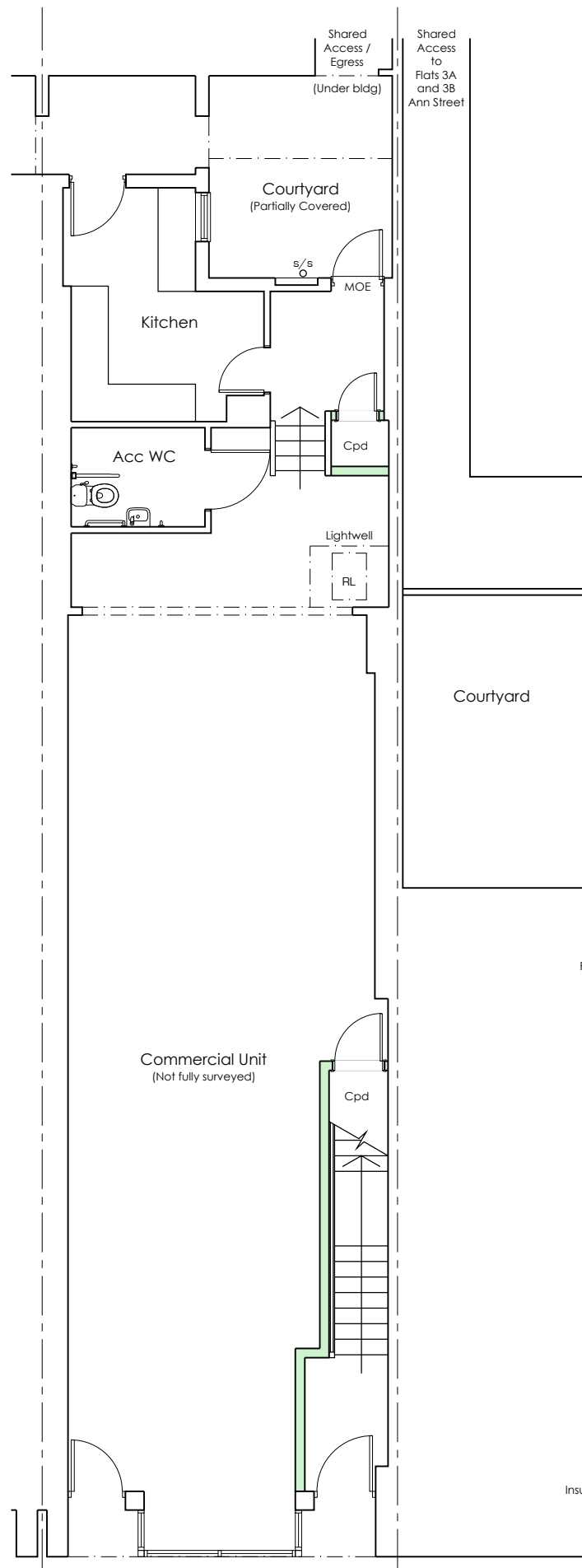
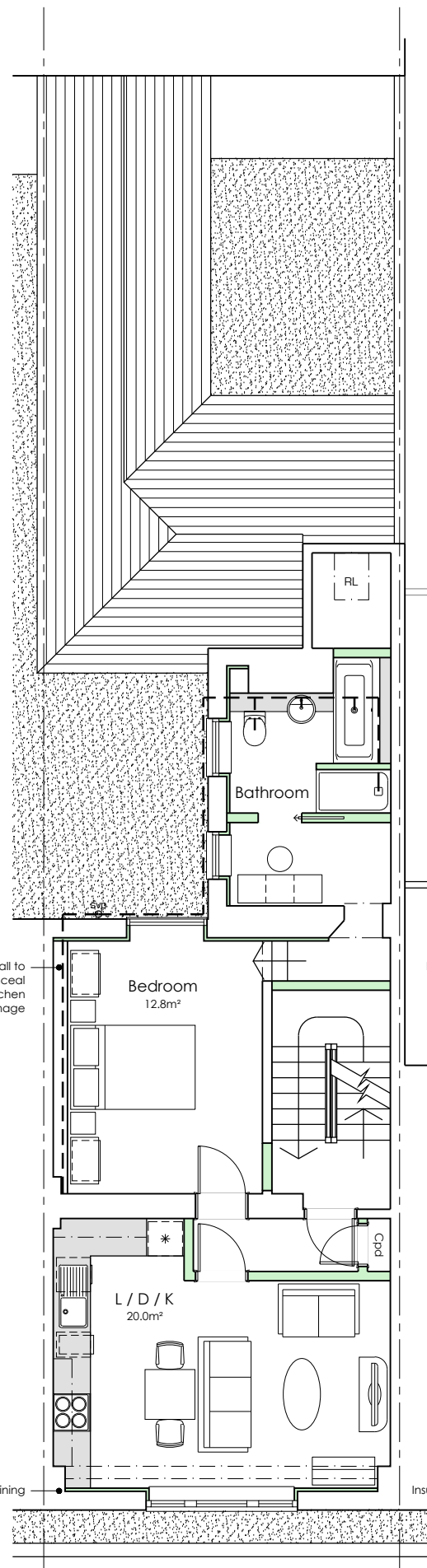


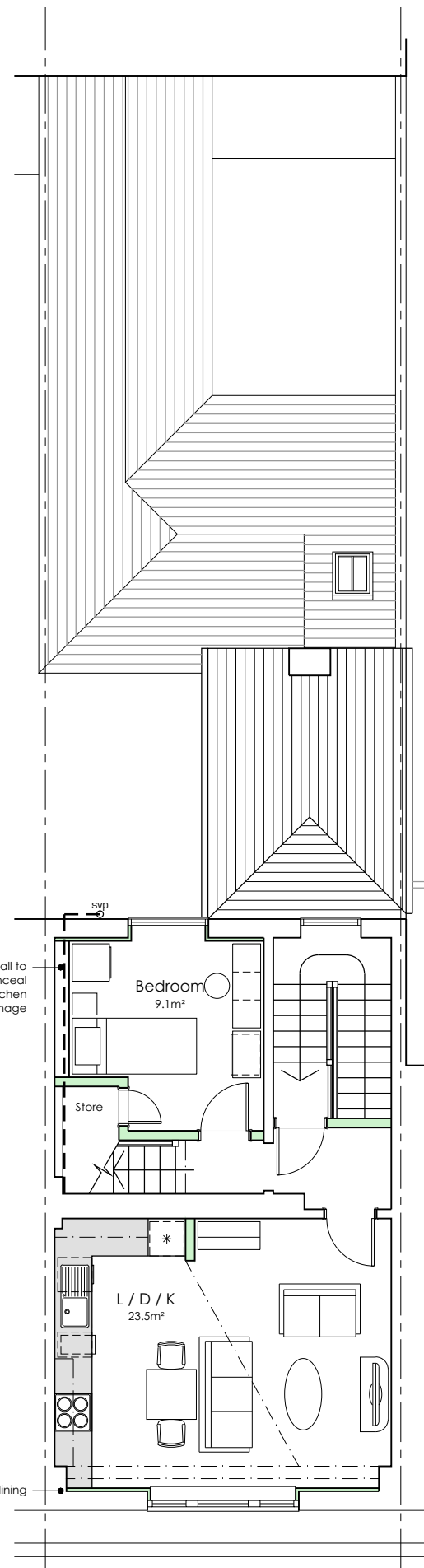
Rev	Amendments	Date
A	Updated for planning	18/02/26



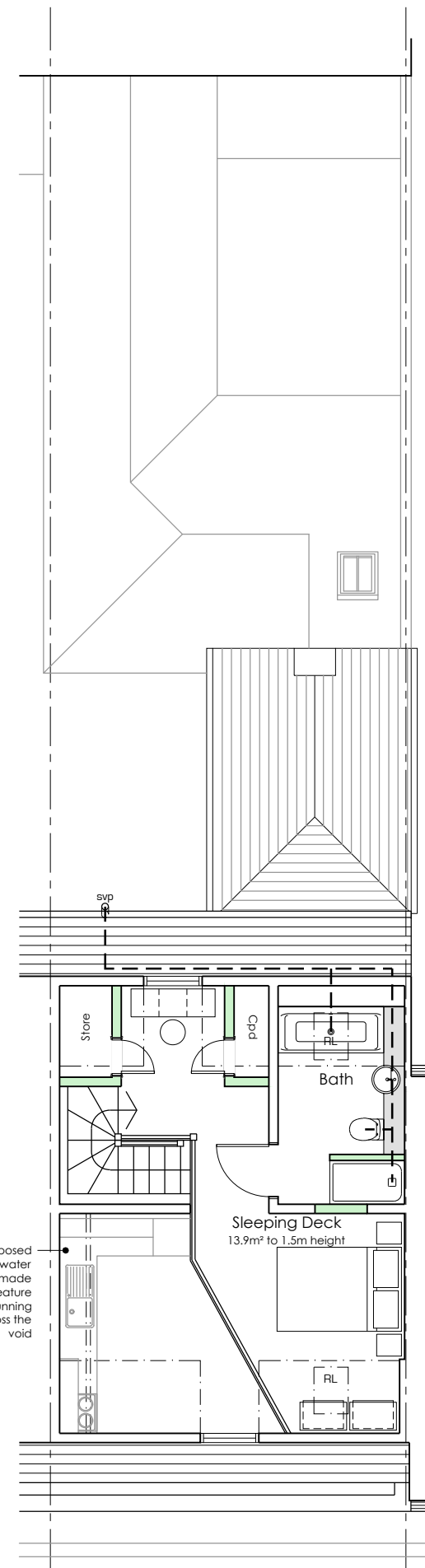
Ground Floor



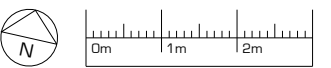
First Floor Flat (50m²)



Second Floor Duplex (66m²)



Third Floor



Notes:
 OS Extract provided by Messrs Mapserve
 Landscape and furniture shown indicatively
 Demolition in light grey dash lines. New in solid green

ALCOVE ARCHITECTURE
 / 25a New Broadway Worthing Sussex BN11 4HP
 / 01903 608448 / www.alcovearchitecture.co.uk

Project:
 11 Warwick Street
 Worthing
 BN11 3DF

Drawing Title:
 Floor Plans as Proposed

Status	Scale	Project No.	Drawing No.	Revision	Drawn By	Date
Planning	1:100@A3	25113	P012	A	JE	Jun 25