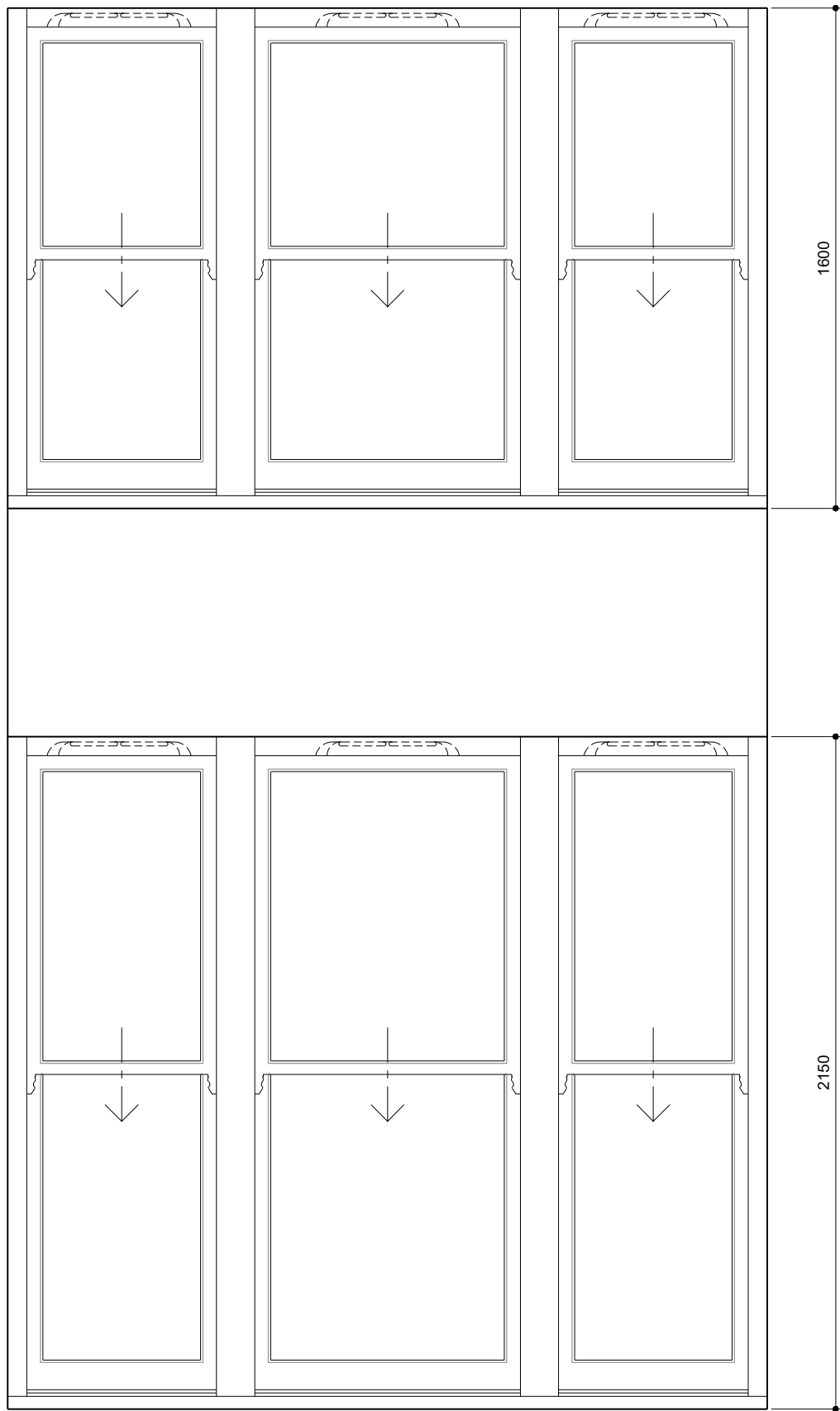
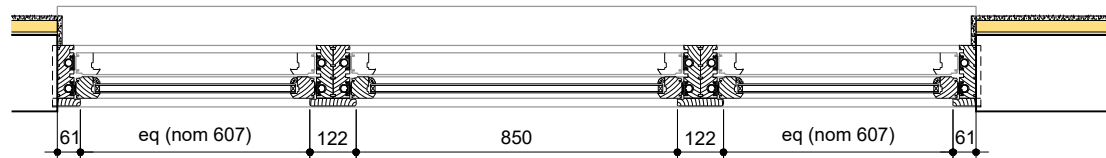


Rev	Amendments	Date



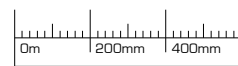
Elevation of replacement first floor (and second floor over) sliding sash fenestration



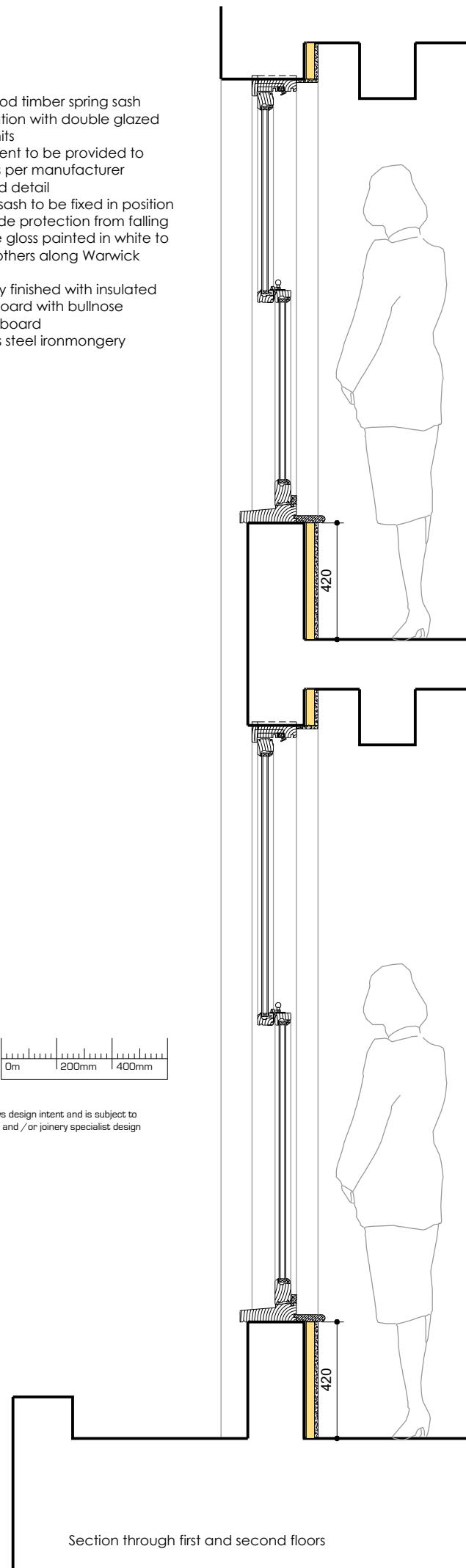
Plan through replacement shopfront

Notes:

- Hardwood timber spring sash fenestration with double glazed clear units
- Trickle vent to be provided to head as per manufacturer standard detail
- Bottom sash to be fixed in position to provide protection from falling
- All to be gloss painted in white to match others along Warwick Street
- Internally finished with insulated plasterboard with bullnose windowboard
- Stainless steel ironmongery



Notes:
 Drawing shows design intent and is subject to manufacturer and /or joinery specialist design

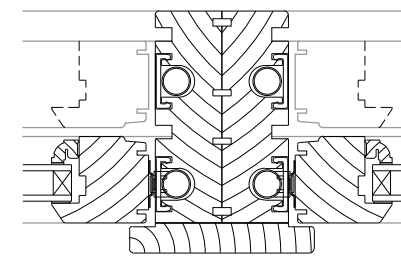


Section through first and second floors

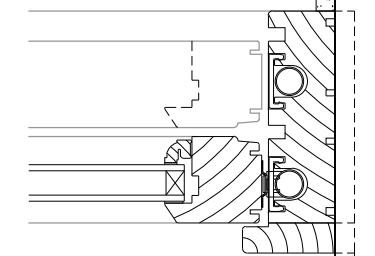
Head

Transom

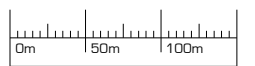
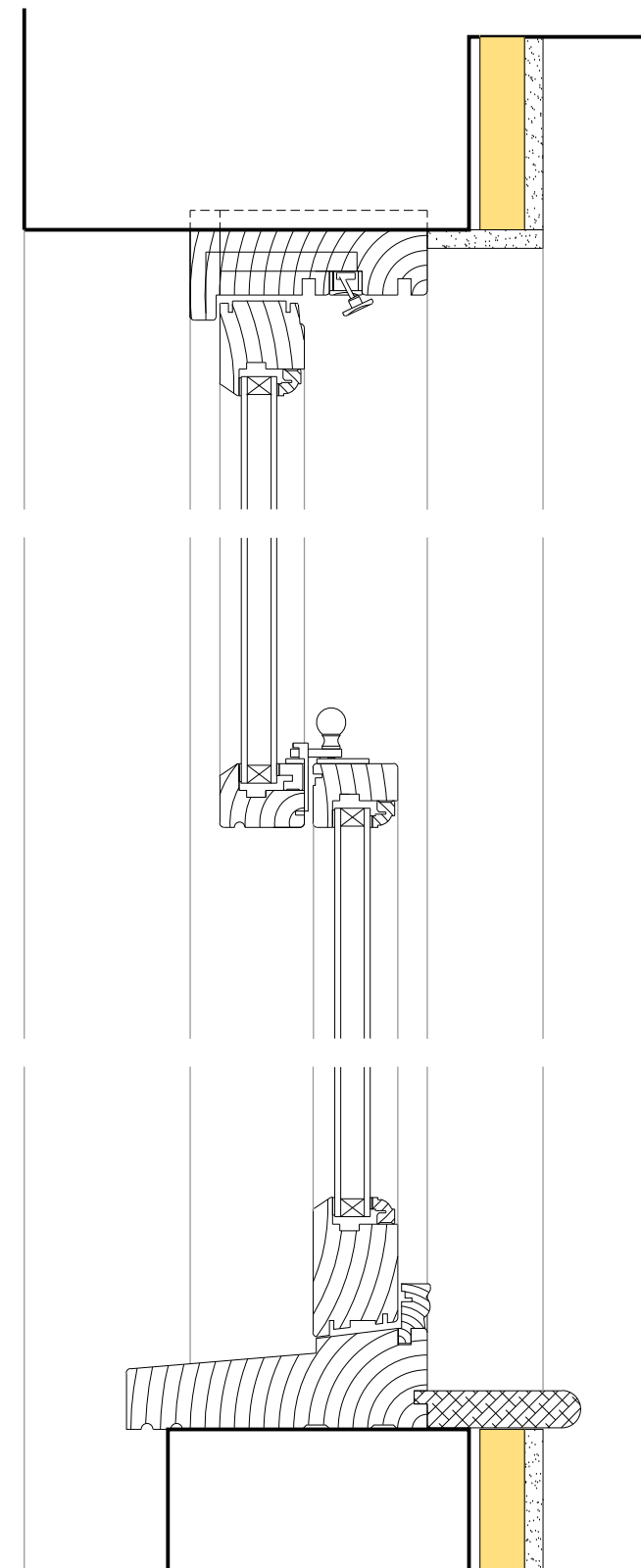
Cill



Mullion



Jamb



Notes:
 Drawing shows design intent and is subject to manufacturer and /or joinery specialist design

ALCOVE ARCHITECTURE

25a New Broadway Worthing Sussex BN11 4HP
 01903 608448 / www.alcovearchitecture.co.uk

Project:
 11 Warwick Street
 Worthing
 BN11 3DF

Drawing Title:
 Proposed Replacement Sash Windows
 - General arrangement 1:20
 - Details 1:5

Status		
Planning		
Scale	Drawn By	Date
var@A3	JE	Feb 26
Project No.	Drawing No.	Revision
25113	P018	