



Southern windows - Refer to P018 and P019 for replacements



Typical internal views - Top: Dormer. Bottom: Sash window



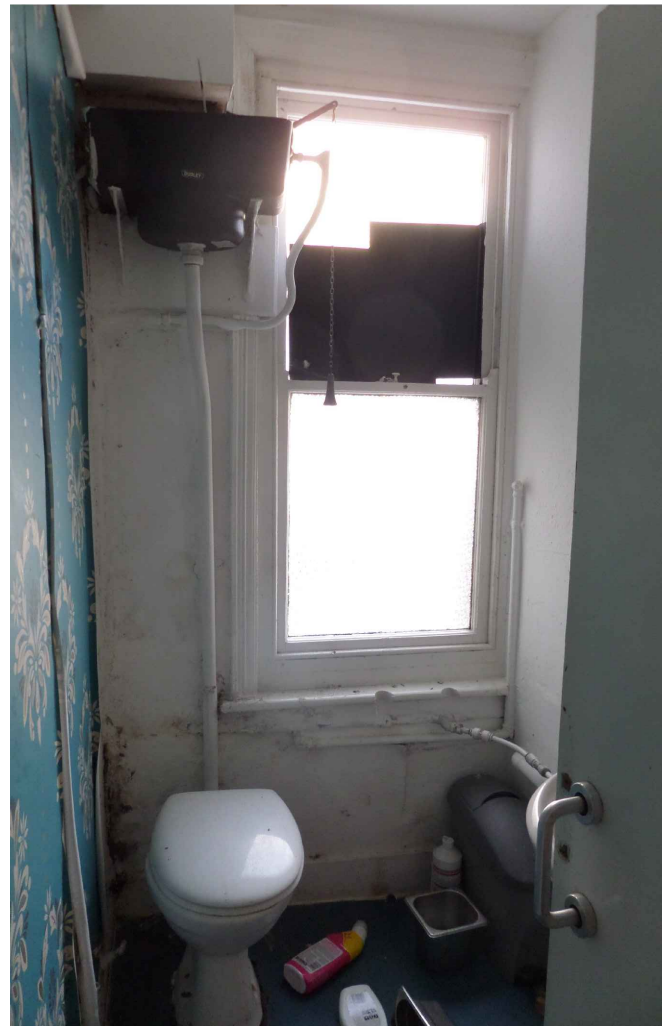
Northern windows - Refer to P019 for replacements



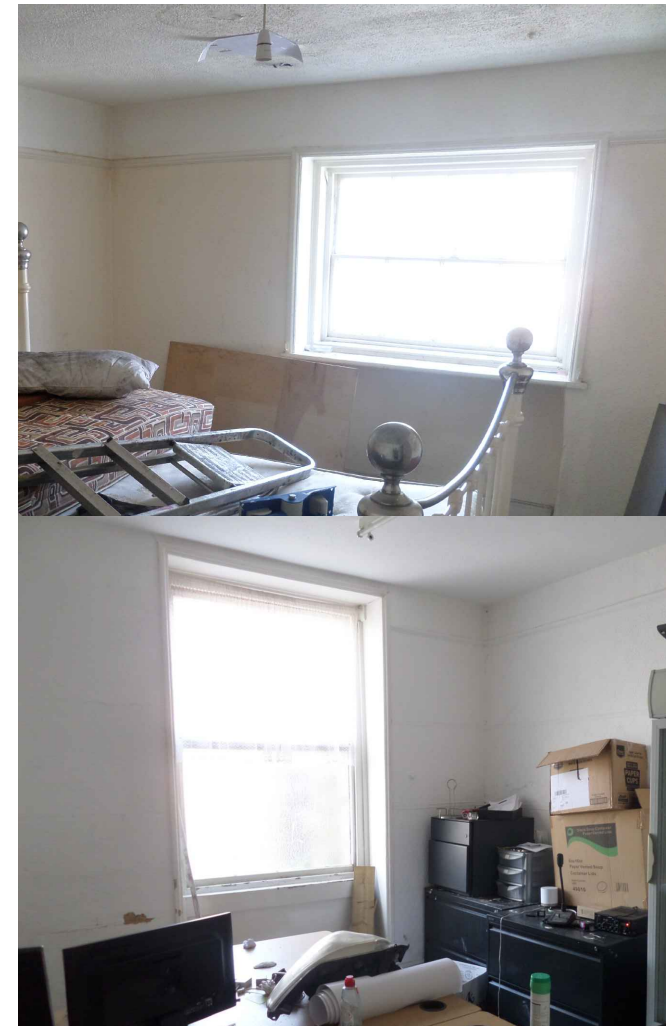
Internal view of outrigger - Refer to P019 for replacement



Shopfront - Refer to P016 and P017 for replacement



Internal view of outrigger - Refer to P019 for replacement



Typical internal views - Northern windows

This drawing is the copyright of **Alcove Architecture Ltd**
 All dimensions must be checked on site prior to construction
 Do not scale this drawing except for Planning Application purposes
 Contractor to work in full compliance with statutory requirements

Rev	Amendments	Date

Notes:
 Existing fenestration is in poor condition and therefore
 unable to be accurately surveyed / measured

ALCOVE ARCHITECTURE
 / 25a New Broadway Worthing Sussex BN11 4HP
 / 01903 608448 / www.alcovearchitecture.co.uk

Project:
 11 Warwick Street
 Worthing
 BN11 3DF

Drawing Title:
 Existing Fenestration to be replaced

Status:
Information

Scale	Drawn By	Date
Not To Scale	JE	Feb 26
Project No.	Drawing No.	Revision
25113	P020	

Alcove Architecture Ltd - Registered No. 8543375